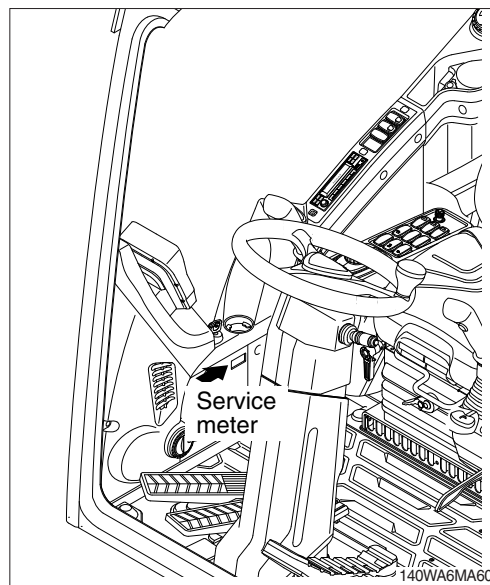


1. INSTRUCTION

1) INTERVAL OF MAINTENANCE

- (1) Inspect and service machine as described on page 4-10.
- (2) Shorten intervals of inspection and service depending on site conditions. (such as dusty area, quarry, sea shore and etc.)
- (3) Practice the entire related details at the same time when the service interval is doubled.
For example, in case of 100 hours, carry out all the maintenance 「Each 100 hours, each 50 hours and daily service」 at the same time.



2) PRECAUTION

- (1) Do not perform maintenance on the machine until you have read the operator's manual and are familiar with the machine.
- (2) Daily inspection should be performed according to section, Maintenance check list.
- (3) Engine and hydraulic components have been preset from the factory.
Do not allow unauthorized personnel to reset them.
- (4) Drain the used oil and coolant (always in separate containers). Handle and dispose of the waste per regulation of each province/country as well as any local laws.
- ▲ **Hot oil and hot components can cause serious injury or death. Do not allow hot oil or hot components to contact skin. Failure to comply may result in serious injury or death.**
- △ **Accumulated grease and oil on the machine is a fire hazard. Remove any coating/film of fuel, oil or grease by steam cleaning the machine with high pressure water. Perform this at minimum of 1000 hours.**
- △ **Inspect the engine compartment for any trash build up. Remove any trash build up from the engine compartment.**
- (5) Ask your local dealer or HD Hyundai Construction Equipment for the maintenance advice if unknown.

3) PROPER MAINTENANCE

(1) Replace and repair of parts

It is required to replace the wearable and consumable parts such as bucket tooth, side cutter, filter and etc., regularly. Replace damaged or worn parts before or at the required time to maintain machine performance.

(2) Always use only HD Hyundai Construction Equipment genuine parts.

(3) Use the recommended oil.

(4) Do not perform repairs while the machine is running. Stop the engine when you fill the oil.

(5) Always wear protective goggles, protective gloves and other personal protective equipment.

(6) Clean around the inlet of oil tank before adding oil.

(7) Drain oil when the temperature of oil is warm.

(8) Relieve hydraulic system of pressure before repairing the hydraulic system.

(9) Confirm if cluster has any warnings present after completion of service.

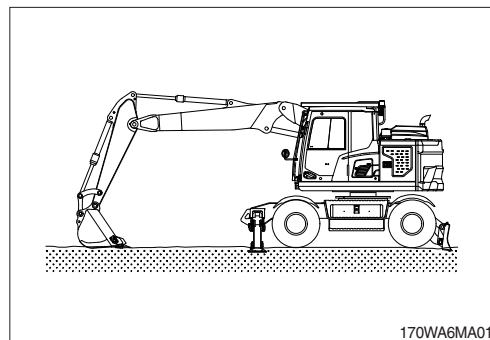
(10) For more detail information of maintenance, please contact your local HD Hyundai Construction Equipment dealer.

※ **Read chapter 1 of this manual for safety instructions prior to performing any maintenance on the machine.**

4) RELIEVING THE PRESSURE IN THE HYDRAULIC SYSTEM

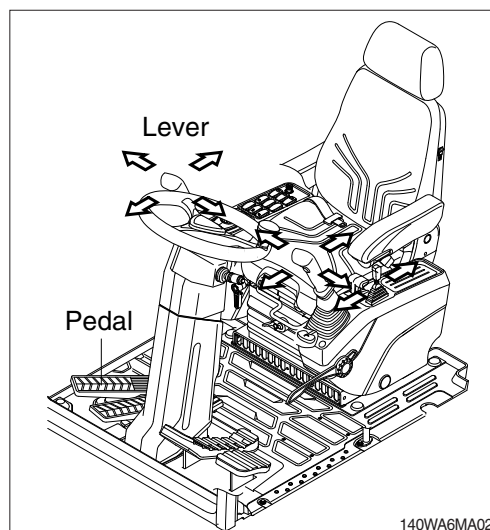
※ Spewing of oil can cause an severe personal injury. Before you loosen hydraulic cap or any hydraulic line on the machine, always make sure machine of off, cooled down and that pressure is relived of the hydraulic system.

- (1) Place machine in the position shown and stop engine.

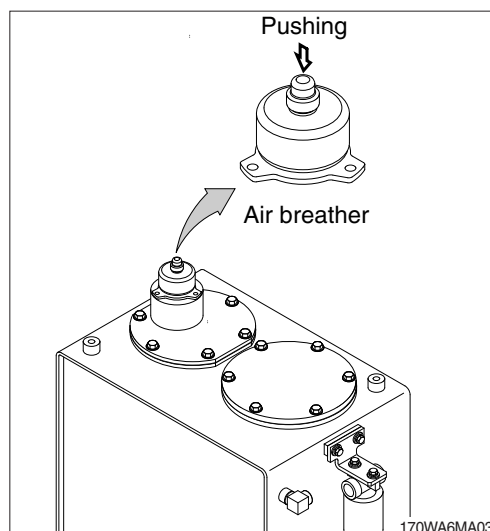


- (2) Set the safety knob completely in the UNLOCK position. Refer to section Levers and pedals. Operate the control levers and pedals fully to the front, rear, left and right, to release the pressure in the hydraulic circuit.

※ This does not completely release the pressure, so when servicing hydraulic component, loosen the connections slowly and do not stand in the direction where the oil may shoot out.



- (3) Relieve the pressure in the tank by pushing the top of the air breather.



5) PRECAUTION WHEN INSTALLING HYDRAULIC HOSES OR PIPES

- (1) Be particularly careful that the joint of hose, pipe and functioning item are not damaged.
Avoid contamination.
- (2) Assemble after cleaning the hose, pipe and joint of functioning item.
- (3) Use genuine parts.
- (4) Do not install hose in a twisted, bent or crimped way.
- (5) Always maintain the specified torque.

6) PERIODIC REPLACEMENT OF PARTS

- (1) Perform periodic maintenance of the machine to prolong its useful life. This will assure and allow you to use the machine safely for a long time.
It is recommended to replace any parts related to safety (as needed), not only for safety but in order to maintain performance as well.
- (2) These parts can shorten the life of the machine.
The life span of such parts cannot be viewed visually and judged by the operator.
- (3) Repair or replace if any abnormality of these parts is found even before the recommended replacement interval.

Periodical replacement of safety parts			Interval
Engine		Fuel hose (tank-engine)	Every 2 years
		Heater hose (heater-engine)	
Hydraulic system	Main circuit	Pump suction hose	Every 2 years
		Pump delivery hose	
		Swing hose	
	Working device	Boom cylinder line hose	Every 2 years
		Arm cylinder line hose	
		Bucket cylinder line hose	
	Brake line	Service brake line hose	Every 2 years
		Parking brake line hose	
		Steering line hose	

※ **Replace O-ring and gasket at the same time when replacing the hose.**

Replace clamp at the same time if the hose clamp is cracked when checking and replacing the hose.

2. TIGHTENING TORQUE

Use following table for unspecified torque.

1) BOLT AND NUT

(1) Coarse thread

Bolt size	8.8T		10.9T		12.9T	
	kgf · m	lbf · ft	kgf · m	lbf · ft	kgf · m	lbf · ft
M 6×1.0	0.8 ~ 1.2	5.8 ~ 8.6	1.2 ~ 1.8	8.7 ~ 13.0	1.5 ~ 2.1	10.9 ~ 15.1
M 8×1.25	2.0 ~ 3.0	14.5 ~ 21.6	2.8 ~ 4.2	20.3 ~ 30.4	3.4 ~ 5.0	24.6 ~ 36.1
M10×1.5	4.0 ~ 6.0	29.0 ~ 43.3	5.6 ~ 8.4	40.5 ~ 60.8	6.8 ~ 10.0	49.2 ~ 72.3
M12×1.75	6.8 ~ 10.2	50.0 ~ 73.7	9.6 ~ 14.4	69.5 ~ 104	12.3 ~ 16.5	89.0 ~ 119
M14×2.0	10.9 ~ 16.3	78.9 ~ 117	16.3 ~ 21.9	118 ~ 158	19.5 ~ 26.3	141 ~ 190
M16×2.0	17.9 ~ 24.1	130 ~ 174	25.1 ~ 33.9	182 ~ 245	30.2 ~ 40.8	141 ~ 295
M18×2.5	24.8 ~ 33.4	180 ~ 241	34.8 ~ 47.0	252 ~ 340	41.8 ~ 56.4	302 ~ 407
M20×2.5	34.9 ~ 47.1	253 ~ 340	49.1 ~ 66.3	355 ~ 479	58.9 ~ 79.5	426 ~ 575
M22×2.5	46.8 ~ 63.2	339 ~ 457	65.8 ~ 88.8	476 ~ 642	78.9 ~ 106	570 ~ 766
M24×3.0	60.2 ~ 81.4	436 ~ 588	84.6 ~ 114	612 ~ 824	102 ~ 137	738 ~ 991
M30×3.5	120 ~ 161	868 ~ 1164	168 ~ 227	1216 ~ 1641	202 ~ 272	1461 ~ 1967

(2) Fine thread

Bolt size	8.8T		10.9T		12.9T	
	kgf · m	lbf · ft	kgf · m	lbf · ft	kgf · m	lbf · ft
M 8×1.0	2.1 ~ 3.1	15.2 ~ 22.4	3.0 ~ 4.4	21.7 ~ 31.8	3.6 ~ 5.4	26.1 ~ 39.0
M10×1.25	4.2 ~ 6.2	30.4 ~ 44.9	5.9 ~ 8.7	42.7 ~ 62.9	7.0 ~ 10.4	50.1 ~ 75.2
M12×1.25	7.3 ~ 10.9	52.8 ~ 78.8	10.3 ~ 15.3	74.5 ~ 110	13.1 ~ 17.7	94.8 ~ 128
M14×1.5	12.4 ~ 16.6	89.7 ~ 120	17.4 ~ 23.4	126 ~ 169	20.8 ~ 28.0	151 ~ 202
M16×1.5	18.7 ~ 25.3	136 ~ 182	26.3 ~ 35.5	191 ~ 256	31.6 ~ 42.6	229 ~ 308
M18×1.5	27.1 ~ 36.5	196 ~ 264	38.0 ~ 51.4	275 ~ 371	45.7 ~ 61.7	331 ~ 446
M20×1.5	37.7 ~ 50.9	273 ~ 368	53.1 ~ 71.7	384 ~ 518	63.6 ~ 86.0	460 ~ 622
M22×1.5	51.2 ~ 69.2	370 ~ 500	72.0 ~ 97.2	521 ~ 703	86.4 ~ 116	625 ~ 839
M24×2.0	64.1 ~ 86.5	464 ~ 625	90.1 ~ 121	652 ~ 875	108 ~ 146	782 ~ 1056
M30×2.0	129 ~ 174	933 ~ 1258	181 ~ 245	1310 ~ 1772	217 ~ 294	1570 ~ 2126

2) PIPE AND HOSE (FLARE type)

Thread size (PF)	Width across flat (mm)	kgf · m	lbf · ft
1/4"	19	4	28.9
3/8"	22	5	36.2
1/2"	27	9.5	68.7
3/4"	36	18	130
1"	41	21	152
1-1/4"	50	35	253

3) PIPE AND HOSE (ORFS type)

Thread size (UNF)	Width across flat (mm)	kgf · m	lbf · ft
9/16-18	19	4	28.9
11/16-16	22	5	36.2
13/16-16	27	9.5	68.7
1-3/16-12	36	18	130
1-7/16-12	41	21	152
1-11/16-12	50	35	253

4) FITTING

Thread size	Width across flat (mm)	kgf · m	lbf · ft
1/4"	19	4	28.9
3/8"	22	5	36.2
1/2"	27	9.5	68.7
3/4"	36	18	130
1"	41	21	152
1-1/4"	50	35	253

5) TIGHTENING TORQUE OF MAJOR COMPONENT

No.	Descriptions		Bolt size	Torque	
				kgf · m	lbf · ft
1	Engine	Engine mounting bolt (bracket-frame, FR)	M16 × 2.0	29.7 ± 3.0	215 ± 32.5
2		Engine mounting bolt (bracket-frame, RR)	M16 × 2.0	29.7 ± 3.0	215 ± 32.5
3		Engine mounting bolt (engine-bracket)	M12 × 1.75	11.5 ± 1.0	83.2 ± 7.2
4		Radiator mounting bolt, nut	M16 × 2.0	29.7 ± 4.5	215 ± 32.5
5		Fuel tank mounting bolt	M20 × 2.5	57.9 ± 5.8	419 ± 42.0
6		Coupling mounting socket bolt	M16 × 2.0	22.0 ± 1.0	159 ± 7.2
7	Hydraulic system	Main pump housing mounting bolt	M10 × 1.5	6.5 ± 0.7	47.0 ± 5.1
8		Main pump mounting socket bolt	M20 × 2.5	57.9 ± 8.7	419 ± 62.9
9		Main control valve mounting bolt	M12 × 1.75	12.2 ± 1.3	88.2 ± 9.4
10		Travel motor mounting socket bolt	M16 × 2.0	29.6 ± 3.2	214 ± 23.1
11		Hydraulic oil tank mounting bolt	M20 × 2.5	57.9 ± 5.8	419 ± 42.0
12		Turning joint mounting bolt, nut	M12 × 1.75	12.8 ± 3.0	92.6 ± 21.7
13	Power train system	Swing motor mounting bolt	M20 × 2.5	57.9 ± 5.8	419 ± 42.0
14		Swing bearing upper mounting bolt	M20 × 2.5	57.9 ± 6.0	419 ± 43.4
15		Swing bearing lower mounting bolt	M20 × 2.5	57.9 ± 6.0	419 ± 43.4
16		Real axle mounting bolt, nut	M20 × 2.5	58.0 ± 6.3	420 ± 45.6
17		Transmission bracket mounting bolt	M20 × 2.5	58.0 ± 6.3	420 ± 45.6
18		Transmission mounting bolt	M20 × 2.5	39.0 ± 4.2	282 ± 30.4
19		Oscillating cylinder mounting bolt	M22 × 1.5	83.2 ± 9.2	602 ± 66.5
20		Oscillating cylinder support mounting bolt	M16 × 2.0	29.7 ± 4.5	215 ± 32.5
21		Wheel nut	M22 × 1.5	60 ± 5.0	434 ± 36.2
22		Front drive shaft mounting bolt, nut	M10 × 1.0	5.9 ± 0.6	42.7 ± 4.3
23		Rear drive shaft mounting bolt, nut	M10 × 1.0	5.9 ± 0.6	42.7 ± 4.3
24		Fan & brake pump mounting bolt	M10 × 1.5	6.9 ± 1.4	49.9 ± 10.1
25	Others	Counterweight mounting bolt	M36 × 3.0	308 ± 46	2228 ± 333
26		Cab mounting bolt, nut	M12 × 1.75	12.8 ± 3.0	92.6 ± 21.7
27		Operator's seat mounting bolt	M 8 × 1.25	4.05 ± 0.8	29.3 ± 5.8
28		Under cover mounting bolt	M12 × 1.75	12.8 ± 3.0	92.6 ± 21.7

※ For tightening torque of engine and hydraulic components, see engine maintenance guide and service manual.

3. FUEL, COOLANT AND LUBRICANTS

1) NEW MACHINE

New machine used and filled with following lubricants.

Description	Specification
Engine oil (API CK-4)	SAE 15W-40, ★SAE 5W-40
DEF/AdBlue®	ISO 22241 (32.5% high-purity urea and 67.5% deionized water)
Hydraulic oil	HD Hyundai Construction Equipment genuine long life (ISO VG 32, VG 46, VG 68) Conventional (ISO VG 15★) HD Hyundai Construction Equipment Bio Hydraulic Oil (HBHO, ISO VG 46)
Transmission oil	SAE 10W-30 (API CF-4)
Axle oil	SAE 85W-90 LSD-Additive (API GL-5) or UTTO
Grease	Lithium base grease NLGI No. 2
Fuel	ASTM D975-No. 2, Ultra low sulfur diesel
Coolant (DCA4)	ASTM D6210 Mixture of 50% ethylene glycol base antifreeze and 50% water. Mixture of 60% ethylene glycol base antifreeze and 40% water. ★

SAE : Society of Automotive Engineers

API : American Petroleum Institute

ISO : International Organization for Standardization

NLGI : National Lubricating Grease Institute

ASTM : American Society of Testing and Material

DEF : Diesel Exhaust Fluid

DEF compatible with AdBlue®

DCA4 : Brand name of Chemical Additive

manufactured by the Cummins Fleetguard Co.

Ultra low sulfur diesel

- sulfur content ≤ 10 ppm

★ Cold region

Russia, CIS, Mongolia

※ Refer to the page 7-17 for further information of recommended oils.

4. MAINTENANCE CHECK LIST

1) DAILY SERVICE BEFORE STARTING

Check items	Service	Page
Visual check		
· Cooling fan	Check	4-27
· After treatment exhaust piping	Check	-
· Air intake piping	Check	-
· Air cleaner dust ejection valve	Check	-
· Crankcase breather tube	Check	-
Fuel tank	Check, Refill	4-29
Hydraulic oil level	Check, Add	4-39
Engine oil level	Check, Add	4-20
Radiator coolant level	Check, Add	4-23
Control panel & pilot lamp	Check, Clean	4-52
Fuel pre-filter element (water)	Check, Drain	4-30
Fan belt tension and damage	Check, Adjust	4-27, 28
DEF/AdBlue® tank	Check, Add	4-32
★ Attachment pin and bushing	Lubricate	4-51
· Boom cylinder tube end		
· Boom foot		
· Boom cylinder rod end		
· Arm cylinder tube end		
· Arm cylinder rod end		
· Boom + Arm connecting		
· Bucket cylinder tube end		

★ Lubricate every 10 hours or daily for initial 100 hours.

2) EVERY 50 HOURS SERVICE

Check items	Service	Page
Fuel tank (water, sediment)	Drain	4-29
Drive shaft grease (flange bearing)	Check, Add	4-49
Front axle pivot pin bushing	Check, Add	4-50
Wheel nuts	Check, Tighten	4-51
Tires (air pressure)	Check, Inflate	4-51
Bucket linkage, arm front and blade pin	Lubricate	4-58
· Bucket cylinder rod end		
· Bucket + Arm connecting		
· Bucket control link + Arm		
· Bucket control rod		
· Bucket link connecting		
· Dozer blade cylinder (rod end, tube end)		4-50
· Dozer blade pivot pin		4-50
· Outrigger (pivot pin, cylinder pin)		4-50

3) INITIAL 50 HOURS SERVICE

Check items	Service	Page
Bolts & nuts	Check, Tight	4-8
· Power train mounting bolts		
· Swing unit mounting bolts		
· Swing bearing mounting bolts		
· Engine mounting bolts		
· Counterweight mounting bolts		
· Turning joint locating bolts		
· Hydraulic pump mounting bolts		
· Under cover mounting bolts		

4) EVERY 100 HOURS SERVICE

Check items	Service	Page
Front axle steering oil	Add, Lubricate	4-50
Trailer hitch bracket and fixation pin	Lubricate	4-59

5) EVERY 200 HOURS SERVICE

Check items	Service	Page
★ Hydraulic oil return filter	Replace	4-47
★ Pilot line filter element	Replace	4-48
★ Drain filter	Replace	4-47

★ **Replace 3 filters for continuous hydraulic breaker operation only.**

6) INITIAL 250 HOURS SERVICE

Check items	Service	Page
Engine oil	Change	4-20, 21
Engine oil filter	Replace	4-20, 21
Fuel pre-filter element	Replace	4-30
Fuel filter element	Replace	4-31
Transmission oil	Change	4-54
Pilot line filter element	Replace	4-48
Hydraulic oil return filter	Replace	4-47
Drain filter	Replace	4-47
Pressure filter element	Clean	4-48

7) EVERY 250 HOURS SERVICE

Check items	Service	Page
Charge air piping	Check	4-31
Charge air cooler	Check	4-26
Battery (voltage), battery cable and connections	Check, Clean	4-60
Swing bearing grease	Lubricate	4-48
Front axle differential gear oil	Add, Lubricate	4-52
Rear axle differential gear oil	Add, Lubricate	4-52
Axle planetary gear oil	Add, Lubricate	4-52
Bolts & nuts	Check, Tight	4-8
<ul style="list-style-type: none"> · Power train mounting bolts · Swing unit mounting bolts · Swing bearing mounting bolts · Engine mounting bolts · Counterweight mounting bolts · Turning joint locating bolts · Hydraulic pump mounting bolts · Under cover mounting bolts 		
Attachment pin and bushing	Lubricate	4-58
<ul style="list-style-type: none"> · Boom cylinder tube end · Boom foot · Boom cylinder rod end · Arm cylinder tube end · Arm cylinder rod end · Boom + Arm connecting · Bucket cylinder tube end 		

8) INITIAL 500 HOURS SERVICE

Check items	Service	Page
Front axle differential gear oil	Change	4-53
Rear axle differential gear oil	Change	4-53
Axle planetary gear oil	Change	4-53

9) EVERY 500 HOURS SERVICE

Check items	Service	Page
Aircon and heater outer filter	Replace	4-63
Aircon and heater inner filter	Replace	4-63
Air cleaner element (primary)★1	Check, Clean	4-29

★1 When working in dusty environments, more frequent cleaning is highly recommended.

10) EVERY 800 HOURS SERVICE

Check items	Service	Page
Engine oil★	Change	4-20, 21
Engine oil filter★	Replace	4-20, 21
Radiator, cooler fin and charge air cooler	Check, Clean	4-26

★ Change oil and filter every 500 hours when using API CJ-4

11) EVERY 1000 HOURS SERVICE

Check items	Service	Page
Fuel filter element	Replace	4-31
Fuel pre-filter element	Replace	4-30
Drive belt, cooling fan	Check	4-27
Cooling fan belt tensioner	Check	4-28
Swing gear and pinion grease	Change	4-49
Hydraulic oil return filter	Replace	4-47
Drain filter	Replace	4-47
Pilot line filter element	Replace	4-48
Hydraulic tank air breather element	Replace	4-47
Pressure filter element	Clean	4-48
Transmission oil	Change	4-54

12) EVERY 1500 HOURS SERVICE

Check items	Service	Page
Front axle differential gear oil	Change	4-53
Rear axle differential gear oil	Change	4-53
Axle planetary gear oil	Change	4-53

13) EVERY 2000 HOURS SERVICE

Check items	Service	Page
Coolant, cooling system and antifreeze ^{★2}	Change, Flush	4-34
Engine cleaning	Clean	4-36
Vibration damper (rubber)	Check	4-37
Vibration damper (viscous)	Check	4-37
Hydraulic oil ^{★2}	Change	4-46
HBHO ^{★3}	Change	4-46
Hydraulic tank suction strainer	Check, Clean	4-46
Air cleaner element (primary, safety) ^{★4}	Replace	4-27
RCV lever	Check, Lubricate	4-49
Hoses, fittings, clamps (fuel, coolant, hydraulic)	Check, Retighten, Replace	-

^{★2} Conventional

^{★3} If you do not want to change HBHO (HD Hyundai Construction Equipment Bio Hydraulic Oil, ISO VG 46) every 2000 hours, contact your local HD Hyundai Construction Equipment dealer and ask about SAMPLING.

^{★2,★3} Change hydraulic oil every 600 hours of continuous hydraulic breaker operation.

^{★4} When working in dusty environments, more frequent replacing is highly recommended.

14) EVERY 4000 HOURS SERVICE

Check items	Service	Page
DEF/AdBlue® tank filter	Replace	4-32

15) EVERY 4500 HOURS SERVICE

Check items	Service	Page
DEF/AdBlue® supply module filter★	Replace	4-34

★ When working in dusty environments, inspection per 1500 hours is highly recommended.

16) EVERY 5000 HOURS SERVICE

Check items	Service	Page
Overhead set (shop inspection)	Adjust	4-38, 39, 40, 41, 42, 43
Hydraulic oil ^{★5}	Change	4-46

^{★5} HD Hyundai Construction Equipment genuine long life

^{★5} Change hydraulic oil every 1000 hours of continuous hydraulic breaker operation.

17) EVERY 6000 HOURS SERVICE

Check items	Service	Page
Coolant, cooling system and antifreeze ^{★5}	Change, Flush	4-34

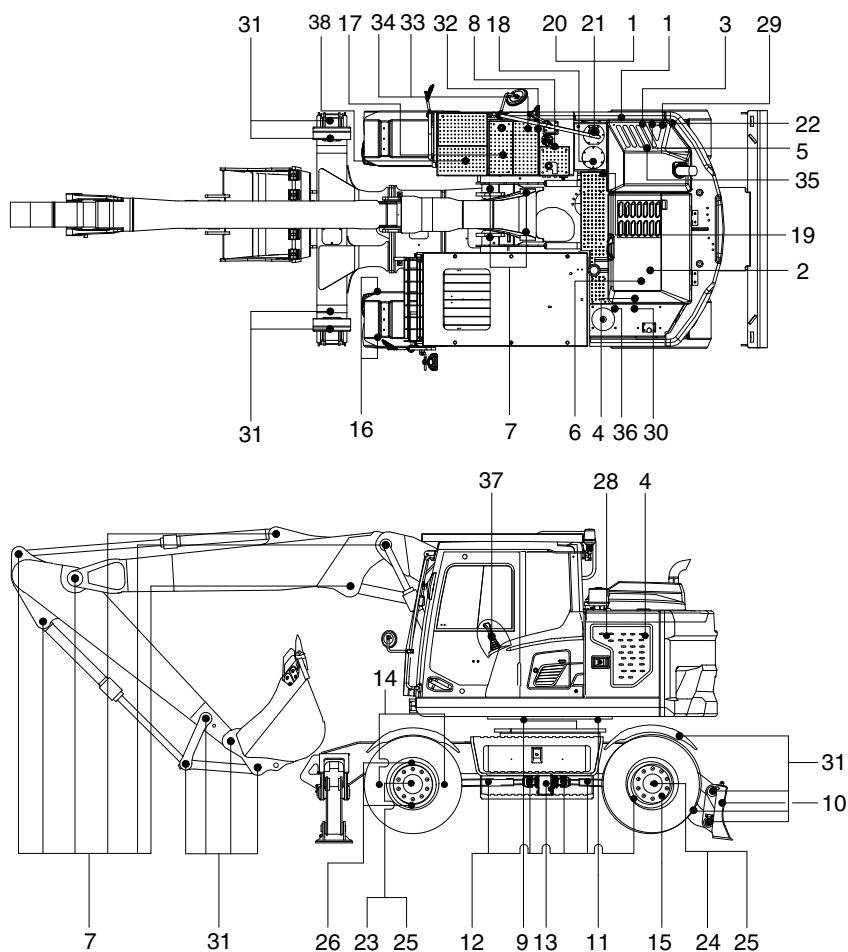
^{★5} HD Hyundai Construction Equipment genuine long life

18) WHEN REQUIRED

Whenever you have trouble with the machine, you must perform the service of related items, system by system.

Check items	Service	Page
Fuel system		
· Fuel tank	Drain or Clean	4-29
· Fuel pre-filter element	Drain or Replace	4-30
· Fuel filter element	Replace	4-31
· Fuel filler pump filter	Clean, Replace	4-44
Engine lubrication system		
· Engine oil	Change	4-20, 21
· Engine oil filter	Replace	4-20, 21
Engine cooling system		
· Radiator coolant	Add or Change	4-23, 24, 25, 26
· Radiator	Clean or Flush	4-23, 24, 25, 26
· Charge air cooler	Check, Clean	4-26
Engine air system		
· Air cleaner element (primary)	Clean or Replace	4-29
· Air cleaner element (safety)	Replace	4-29
Hydraulic system		
· Hydraulic oil	Add or Change	4-45, 46
· Hydraulic oil return filter	Replace	4-47
· Drain filter	Replace	4-47
· Pilot line filter element	Replace	4-48
· Hydraulic tank air breather element	Replace	4-47
· Hydraulic oil suction strainer	Clean	4-46
· RCV lever	Lubricate	4-46
Tire pressure	Check, Adjust	4-51
Bucket		
· Tooth	Replace	4-56
· Side cutter	Replace	4-56
· Linkage	Adjust	4-56
· Bucket assy	Replace	4-55
Air conditioner and heater		
· Outer filter	Replace	4-63
· Inner filter	Replace	4-63
Other		
· DEF/AdBlue® tank	Check, Add	4-32
· DEF/AdBlue® supply module filter	Replace	4-34
· DEF/AdBlue® tank filter	Replace	4-33
· DPF (diesel particulate filter)	Clean	4-36

5. MAINTENANCE CHART



94K5-14712

Caution

1. Service intervals are based on the hour meter reading.
2. The number of each item shows the lubrication point on the machine.
3. Stop engine while filling oil and do not allow any open flames near the machine.

Service interval	No.	Description	Service action	Oil symbol	Capacity ℓ (U.S.gal)	Service points No.
10 Hours or daily	1	Hydraulic oil level	Check, Add	HO	103 (27.2)	1
	2	Engine oil level	Check, Add	EO	11.0 (2.9)	1
	4	Radiator coolant	Check, Add	C	19.5 (5.2)	1
	5	Fuel pre-filter element (water)	Check, Drain	-	-	1
	6	Fan belt tension and damage	Check, Adjust	-	-	1
	7	★ Attachment pin & bushing	Check, Lubricate	PGL	-	14
	8	Fuel tank	Check, Refill	DF	200 (52.8)	1
	33	DEF/AdBlue® tank	Check, Add	DEF	48 (12.7)	1

★ Lubricate every 10 hours or daily for initial 100 hours.

※ Oil symbol

Please refer to the recommended lubricants for specification.

DF : Diesel fuel

GO : Gear oil

HO : Hydraulic oil

DEF : DEF/AdBlue®

C : Coolant

PGL : Grease

EO : Engine oil

Service interval	No.	Description	Service action	Oil symbol	Capacity ℓ (U.S.gal)	Service points No.
50 Hours or weekly	8	Fuel tank (water, sediment)	Check, Drain	-	-	1
	12	Drive shaft grease (flange bearing)	Check, Add	PGL	-	6
	14	Front axle pivot pin bushing	Check, Add	PGL	-	2
	15	Wheel nuts	Check, Tighten	-	-	40
	16	Tire (air pressure)	Check, Add	PGL	-	8
	31	Bucket linkage, arm front and blade pins	Check, Add	PGL	-	17
100 Hours	10	Trailer hitch greasing	Lubricate	PGL	-	2
	26	Front axle steering oil	Add, Lubricate	PGL	-	4
250 Hours	4	Charge air cooler and piping	Check	-	-	1
	7	Attachment pins & bushing	Check, Add	PGL	-	14
	9	Swing bearing grease	Lubricate	PGL	-	3
	17	Battery (voltage), battery cable and connections	Check, Clean	-	-	1
	23	Front axle differential gear oil	Add, Lubricate	GO	10.5 (2.77)	1
	24	Rear axle differential gear oil	Add, Lubricate	GO	12.5 (3.30)	1
	25	Axle planetary gear oil	Add, Lubricate	GO	2.5 (0.66)	4
Initial 250 Hours	2	Engine oil	Change	EO	11.0 (2.9)	1
	3	Engine oil filter	Replace	-	-	1
	5	Fuel pre-filter element	Replace	-	-	1
	13	Transmission oil	Change	EO	2.5 (0.66)	1
	18	Hydraulic oil return filter	Replace	-	-	1
	19	Drain filter	Replace	-	-	1
	22	Pilot line filter element	Replace	-	-	1
	29	Fuel filter element	Replace	-	-	1
500 Hours	36	Pressure filter element	Clean	-	-	1
	27	Aircon and heater outer filter	Replace	-	-	1
	27	Aircon and heater Inner filter	Replace	-	-	1
Initial 500 Hours	28	Air cleaner element (primary)	Check, Clean	-	-	1
	23	Front axle differential gear oil	Change	GO	10.5 (2.77)	1
	24	Rear axle differential gear oil	Change	GO	12.5 (3.30)	1
800 Hours	25	Axle planetary gear oil	Change	GO	2.5 (0.66)	4
	2	Engine oil	Change	EO	11.0 (2.9)	1
	3	Engine oil filter	Replace	-	-	1
	30	Radiator, oil cooler, charge air cooler	Check, Clean	-	-	3

※ Oil symbol

Please refer to the recommended lubricants for specification.

DF : Diesel fuel

GO : Gear oil

HO : Hydraulic oil

DEF : DEF/AdBlue®

C : Coolant

PGL : Grease

EO : Engine oil

Service interval	No.	Description	Service action	Oil symbol	Capacity ℓ (U.S.gal)	Service points No.
1000 Hours	5	Fuel pre-filter element	Replace	-	-	1
	6	Drive belt, cooling fan	Check	-	-	2
	6	Cooling fan belt tensioner	Check	-	-	1
	11	Swing gear and pinion grease	Change	PGL	15.8 kg (34.8 lb)	1
	13	Transmission oil	Change	EO	2.5 (0.66)	1
	18	Hydraulic oil return filter	Replace	-	-	1
	19	Drain filter	Replace	-	-	1
	20	Hydraulic oil air breather element	Replace	-	-	1
	22	Pilot line filter element	Replace	-	-	1
	29	Fuel filter element	Replace	-	-	1
	36	Pressure filter element	Clean	-	-	1
1500 Hours	23	Front axle differential gear oil	Change	GO	10.5 (2.77)	1
	24	Rear axle differential gear oil	Change	GO	12.5 (3.30)	1
	25	Axle planetary gear oil	Change	GO	2.5 (0.66)	4
2000 Hours	1	Hydraulic oil ^{*1}	Change	HO	103 (27.2)	1
	1	Hydraulic oil (HBHO ^{*2})	Change	HBHO	103 (27.2)	1
	2	Engine cleaning	Clean	-	-	1
	2	Vibration damper (rubber)	Check	-	-	4
	2	Vibration damper (viscous)	Check	-	-	4
	4	Coolant, cooling system and antifreeze ^{*1}	Change, Flush	C	19.5 (5.2)	1
	21	Hydraulic oil suction strainer	Check, Clean	-	-	1
	28	Air cleaner element (primary, safety)	Replace	-	-	2
	37	RCV lever	Check, Lubricate	PGL	-	2
	-	Hoses, fittings, clamps (Fuel, coolant, hydraulic)	Check, Retighten, Replace	-	-	-
4000 Hours	34	DEF/AdBlue® tank filter	Replace	-	-	1
4500 Hours	32	DEF/AdBlue® supply module filter	Replace	-	-	1
5000 Hours	1	Hydraulic oil ^{*3}	Change	HO	103 (27.2)	1
	2	Overhead set (shop inspection)	Adjust	-	-	1
6000 Hours	4	Coolant, cooling system and antifreeze ^{*3}	Change, Flush	C	19.5 (5.2)	1
As required	27	Aircon & heater outer filter	Replace	-	-	1
	27	Aircon & heater Inner filter	Replace	-	-	1
	28	Air cleaner element (primary)	Clean, Replace	-	-	1
	28	Air cleaner element (safety)	Replace	-	-	1
	35	DPF (diesel particulate filter)	Clean	-	-	1
	38	Fuel filler pump filter	Clean, Replace	-	-	1

^{*1} Conventional ^{*2} HD Hyundai Construction Equipment Bio Hydraulic Oil

^{*3} HD Hyundai Construction Equipment genuine long life

※ Oil symbol

Please refer to the recommended lubricants for specification.

DF : Diesel fuel

GO : Gear oil

HO : Hydraulic oil

DEF : DEF/AdBlue®

C : Coolant

PGL : Grease

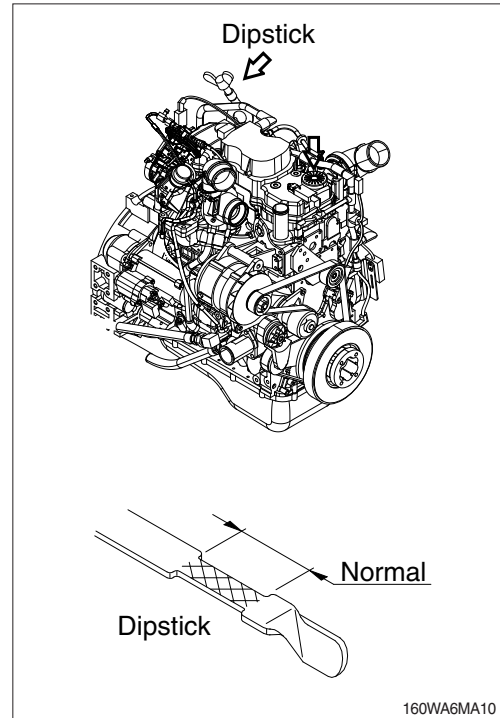
EO : Engine oil

6. SERVICE INSTRUCTION

1) CHECK ENGINE OIL LEVEL

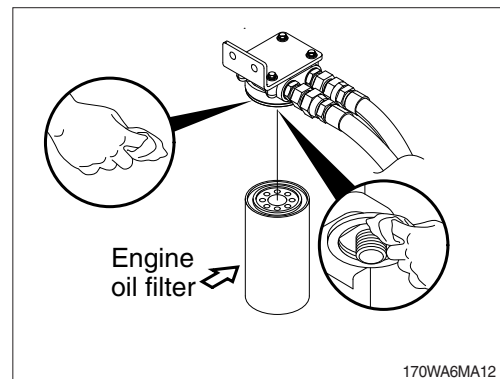
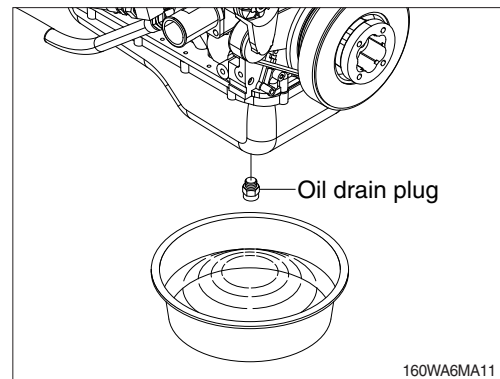
Check the oil level with the machine on flat ground before starting engine.

- (1) Pull out the dipstick and wipe with a clean cloth.
 - (2) Check the oil level by inserting the dipstick completely into the hole and pulling out again.
 - (3) If oil level is LOW, add oil and then check again.
- ※ If the oil is contaminated or diluted, change the oil regardless of the regular change interval.
 - ※ Check oil level after engine has been stopped for 15 minutes.
 - ▲ Do not operate unless the oil level is in the normal range.
 - ※ Keep all parts clean from contaminants. Contaminants may cause rapid wear and shortened component life.

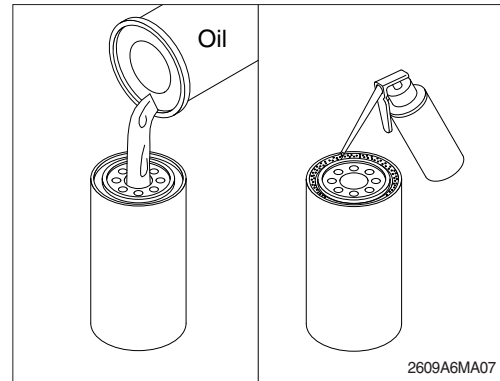


2) REPLACEMENT OF ENGINE OIL AND OIL FILTER

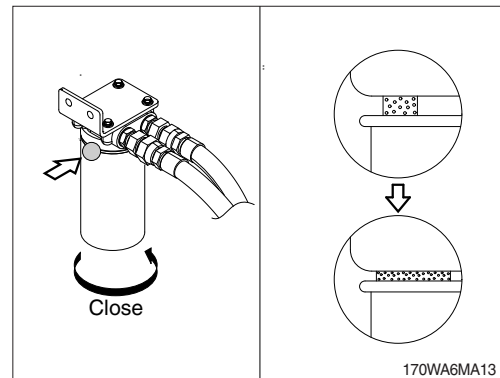
- (1) Operate the engine until the coolant temperature reaches 60°C (140°F). Shut off the engine.
 - (2) Remove the oil drain plug. Drain the oil immediately to be sure all the oil and suspended contaminants are removed from the engine.
- ※ A drain pan with a capacity of 20 liters (5.3 U.S. gallons) will be adequate.
 - ※ Dispose of the waste oil in accordance with local regulations.
- (3) Clean the area around the lubricating oil filter head.
 - (4) Use oil filter wrench to remove the oil filter.
 - (5) Clean the gasket surface of oil filter head.
- ※ The O-ring can stick on the filter head. Be sure it is removed before installing the new filter.



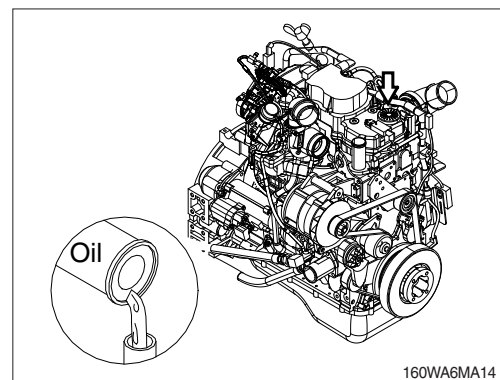
- (6) Apply a light film of lubricating oil to the gasket sealing surface before installing the filter.
- ※ **Fill the filter with clean lubricating oil.**



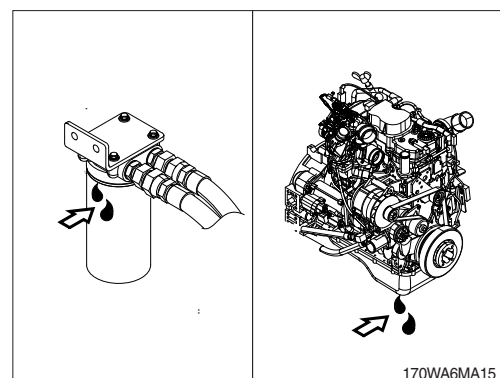
- (7) Install the filter to the filter head.
- Tighten the filter until the gasket contacts the filter head surface.
- Tighten 3/4 to 1 turn after the gasket makes contact with the filter head.
- ※ **Mechanical over-tightening may distort the threads or damage the filter element seal.**



- (8) Clean and check the lubricating oil drain plug threads and sealing surface.
- Install the lubricating oil pan drain plug.
- (9) Fill the engine with clean oil to the proper level.
- Quantity : 11 ℓ (2.9 U.S.gallons)



- (10) Operate the engine at low idle and inspect for leaks at the filters and the drain plug.
- Shut the engine off and check the oil level with the dipstick. Allow 15 minutes for oil to drain down before checking.



■ ENGINE OIL DISCOLORATION (darkened)

Even if the color of engine oil becomes dark (even black), the major function is able to be preserved for long.

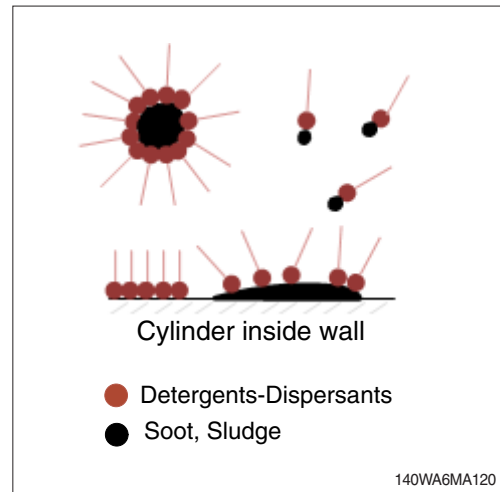
- There are several factors that engine oil becomes discolored such as deterioration, contamination, and characteristics of additives.
- If engine oil has proper viscosity, Detergents-Dispersants in engine oil may be one of main reasons of the color darkened.

※ Detergents-Dispersants

It is a kind of additives that deterge contaminants and oxides and inhibit sludge and soot from gathering, then disperse them into the oil.

As a result of this process, the oil contains soot and sludge dispersed, which makes oil color dark.

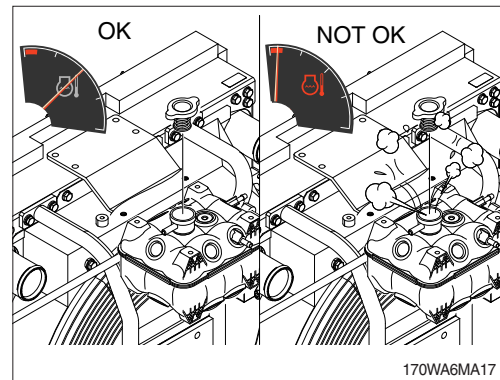
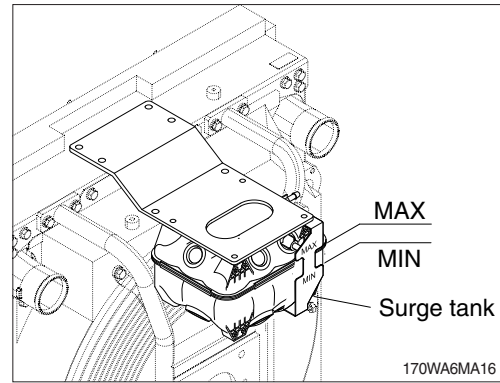
- Unlike to Gasoline engine, Diesel engine have more possibility to generate these by-products because of its combustion characteristic, which is able to accelerate discoloration.
- B4.5 engines have more possibility to be vulnerable to discoloration rather than B6.7 engines because of PM emission differences.



3) CHECK RADIATOR COOLANT

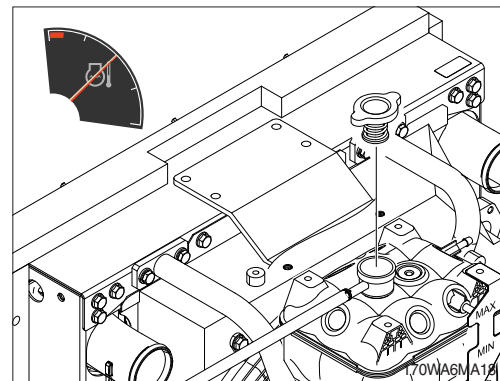
- (1) Check if the level of coolant in reservoir tank is between MAX and MIN
- (2) Add the mixture of antifreeze and water after removing the cap of the surge tank if coolant is not sufficient.
- (3) Replace gasket of surge tank when it is damaged.

- ▲ Hot coolant can spray out if surge tank cap is removed while engine is hot. Remove the cap after the engine has cooled down.
- ※ Do not add cold coolant to a hot engine ; engine castings can be damaged. Allow the engine to cool to below 50°C (120°F) before adding coolant.



4) FLUSHING AND REFILLING OF RADIATOR

- (1) Change radiator coolant
- ▲ Avoid prolonged and repeated skin contact with used antifreeze. Such prolonged and repeated contact can cause skin disorders or other bodily injury.
Avoid excessive contact-wash thoroughly after contact.
Keep out of reach of children.
 - ※ Protect the environment : Handling and disposal of used antifreeze can be subject to federal, state, and local law regulation.
Use authorized waste disposal facilities, including civic amenity sites and garages providing authorized facilities for the receipt of used antifreeze.
If in doubt, contact your local authorities for guidance as to proper handling of used antifreeze.

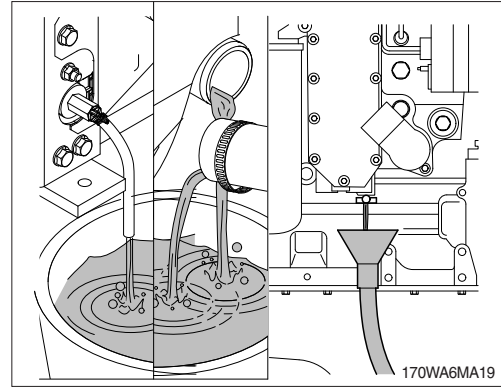


- ▲** Wait until the temperature is below 50 °C (122 °F) before removing the coolant system pressure cap.

Failure to do so can cause personal injury from heated coolant spray.

Drain the cooling system by opening the drain valve on the radiator and opening the drain valve on the bottom of the engine oil cooler housing.

A drain pan with a capacity of 30 liters (7.9 U.S. gallons) will be adequate.

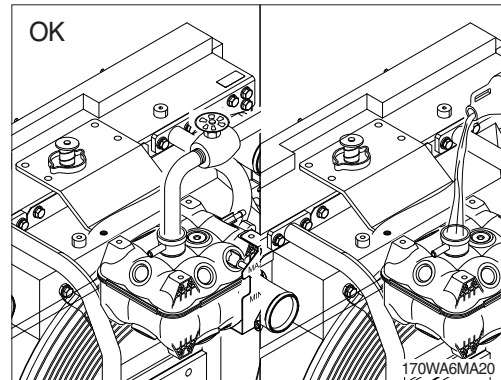


(2) Flushing of cooling system

- ① Fill the system with a mixture of sodium carbonate and water (or a commercially available equivalent).

※ Use 0.5 kg (1.0 pound) of sodium carbonate for every 23 liters (6.0 U.S. gallons) of water.

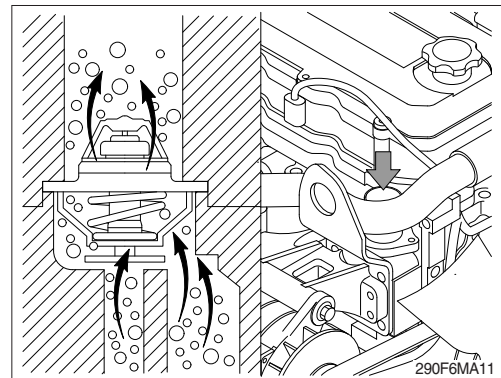
※ Do not install the surge tank cap. The engine is to be operated without the cap for this process.



※ During filling, air must be vented from the engine coolant passages.

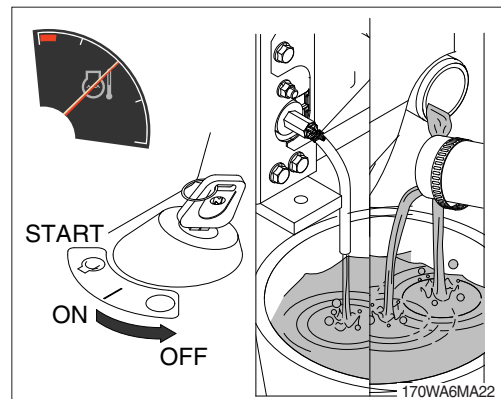
The system must be filled slowly to prevent air locks or serious engine damage can result. Wait 2 to 3 minutes to allow air to be vented, then add mixture to bring the level to the top.

※ This provides adequate venting for a fill rate of 19 liters (5.0 U.S. gallons) per minute.

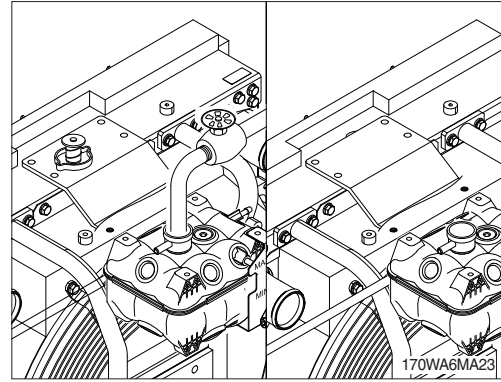


- ② Operate the engine for 5 minutes with the coolant temperature above 80°C (176°F).

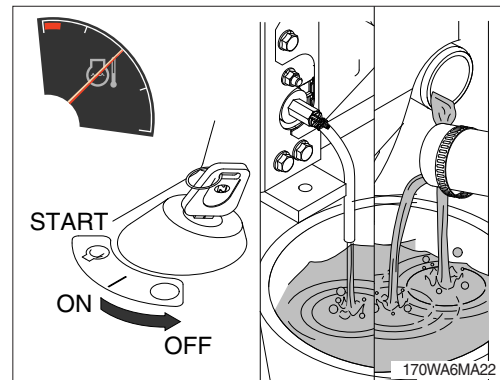
Shut the engine off, and drain the cooling system.



- ③ Fill the cooling system with clean water.
- ※ **Be sure to vent the engine and aftercooler for complete filling.**
- ※ **Do not install the surge tank cap or the new coolant filter.**

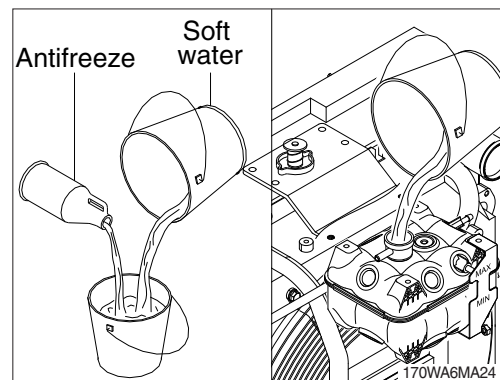


- ④ Operate the engine for 5 minutes with the coolant temperature above 80°C (176°F). Shut the engine off, and drain the cooling system.
- ※ **If the water being drained is still dirty, the system must be flushed again until the water is clean.**

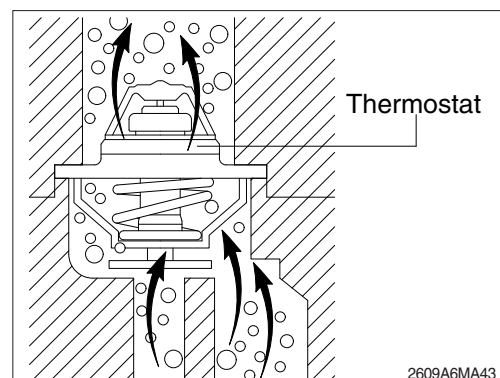


(3) Cooling system filling

- ① Use a mixture of 50 percent soft water and 50 percent ethylene glycol antifreeze to fill the cooling system. Refer to page 7-17.
Coolant capacity : 19.5 ℓ (5.2 U.S. gallons)
- ※ **Do not use hard water such as river water or well water.**



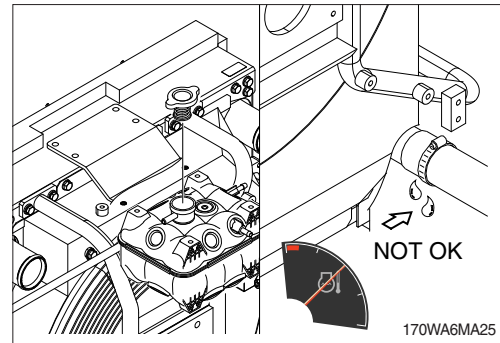
- ② The system has a maximum fill rate of 19 liters (5.0 U.S. gallons) per minute. Do not exceed this fill rate.
- ※ **The system must be filled slowly to prevent air locks.**
During filling, air must be vented from the engine coolant passage.



- ③ Install the pressure cap. Operate the engine until it reaches a temperature 80°C (176°F), and check for coolant leaks.

Check the coolant level again to make sure the system is full of coolant after allow engine to cool.

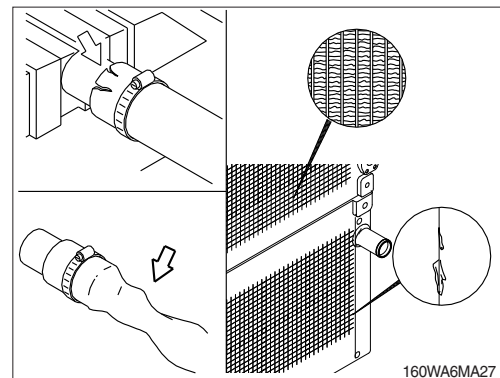
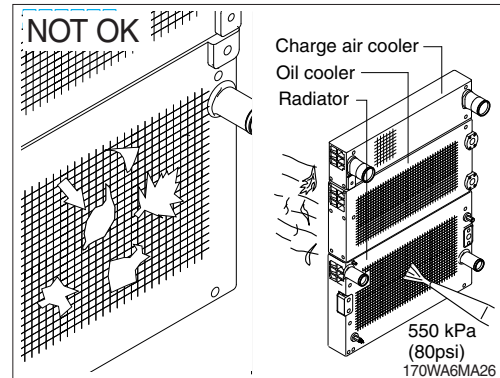
- ※ If the gasket of the surge tank cap is damaged, discard the old filler cap and install a new cap.



5) CLEAN RADIATOR AND OIL COOLER

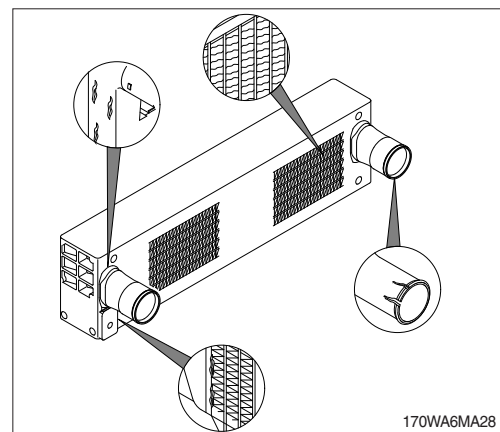
Check, and if necessary, clean and dry outside of radiator and oil cooler. After working in a dusty place, clean radiator more frequently.

- (1) Visually inspect the radiator for clogged radiator fins.
 - (2) Use 550 kPa (80 psi) air pressure to blow the dirt and debris from the fins.
 - (3) Visually inspect the radiator for bent or broken fins.
- ※ If the radiator must be replaced due to bent or broken fins which can cause the engine to overheat, refer to the manufacturer's replacement procedures.
- (4) Visually inspect the radiator for core leaks.



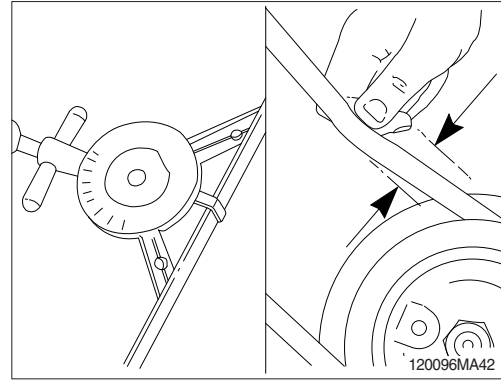
6) CHECK CHARGE AIR COOLER

Inspect the charge air cooler for dirt and debris blocking the fins. Check for cracks, holes, or other damage. If damage is found, please contact your local HD Hyundai Construction Equipment dealer.



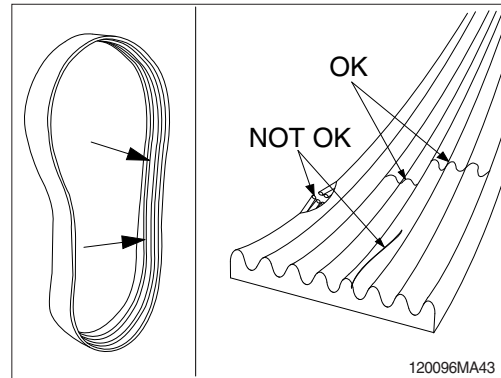
7) FAN BELT

- (1) A deflection method can be used to check belt tension by applying 11.3 kgf (25 lbf) of force between the pulleys on V-belts. If the deflection is more than one belt thickness per foot of pulley center distance, the belt tension must be adjusted.

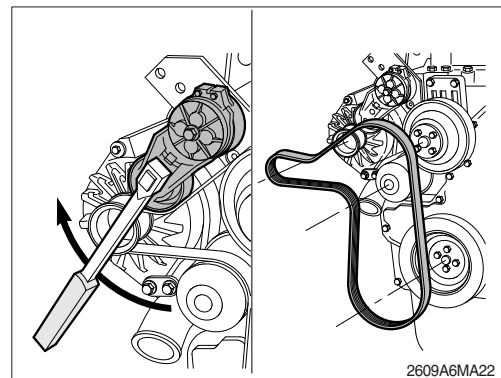


- (2) Inspect the fan belt for damage.

- ① Transverse (across the belt) cracks are acceptable.
- ② Longitudinal (direction of belt ribs) cracks that intersect with transverse cracks are not acceptable.
- ③ Replace the belt if it is frayed or has pieces of material missing.



- (3) Inspect the idle and drive pulleys for wear or cracks.



8) INSPECTION OF COOLING FAN

▲ Serious injury can result from a fan blade failure. Never pull or pry on the fan. This can damage the fan blade and cause fan failure.

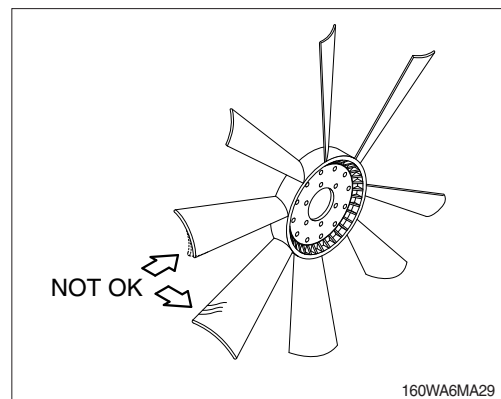
※ Rotate the crankshaft by using the engine bearing gear.

※ A visual inspection of the cooling fan is required daily.

Check for cracks, loose rivets, and bent or loose blades.

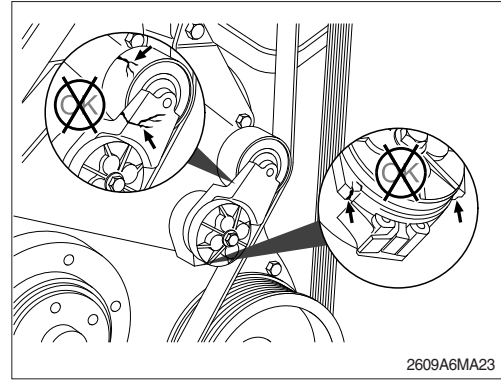
Check the fan to make sure it is securely mounted. Tighten the capscrews if necessary.

Replace any fan that is damaged.



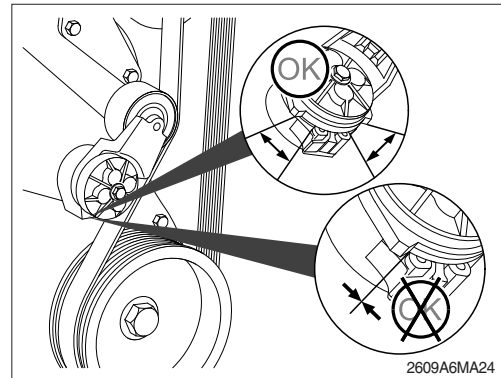
9) FAN BELT TENSIONER

- (1) With the engine stopped, check the tensioner arm, pulley, and stops for cracks. If any cracks are found, the tensioner must be replaced.

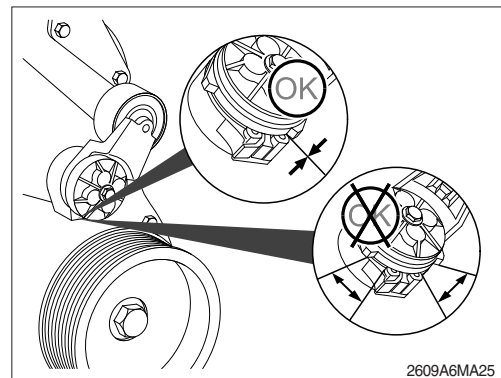


- (2) With the belt installed, verify that neither tensioner arm stop is in contact with the spring case stop.

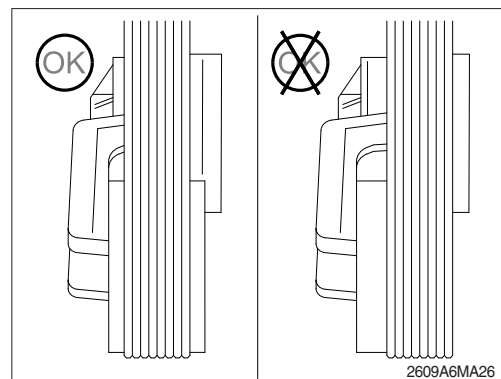
After replacing the belt, if the tensioner arm stops are still in contact with the spring case stop, replace the tensioner.



- (3) With the belt removed, verify that the tensioner arm stop is in contact with the spring case stop. If these two are not touching, the tensioner must be replaced.



- (4) Check the location of the drive belt on the belt tensioner pulley. The belt should be centered on, or close to the middle of the pulley. Misaligned belts, either too far forward or backward, can cause belt wear, belt roll-offs, or increase uneven tensioner bushing wear.



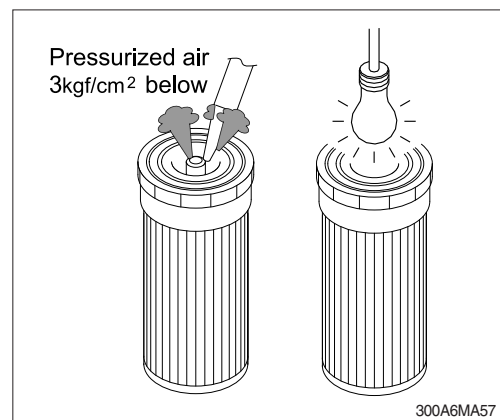
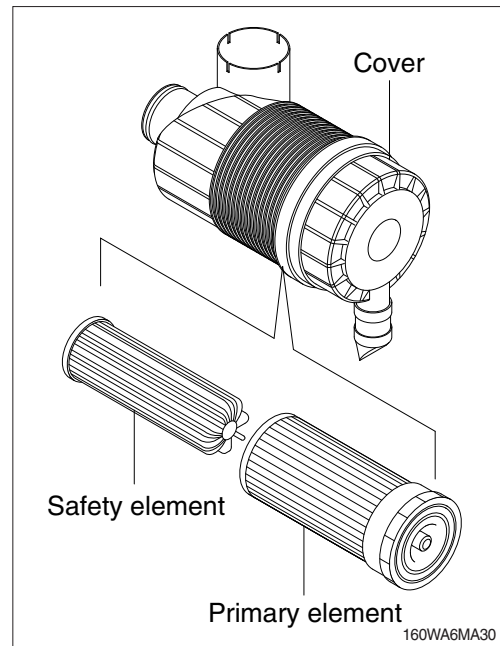
10) CLEANING OF AIR CLEANER ELEMENT

(1) Primary element

- ① Loosen the cover and remove the element.
 - ② Clean the inside of the body.
 - ③ Clean the element with pressurized air.
 - Remove the dust inside of the element by the pressurized air (below 3 kgf/cm², 40 psi) forward and backward equally.
 - ④ Inspect for cracks or damage of element by putting a light bulb inside of the cover.
 - ⑤ Insert element and tighten the cover.
- ※ **Replace the primary element after 4 cleanings.**

(2) Safety element

- ※ **Replace the safety element only when the primary element is cleaned 4 times.**
- △ **Always replace the safety element. Never attempt to reuse the safety element by cleaning the element.**

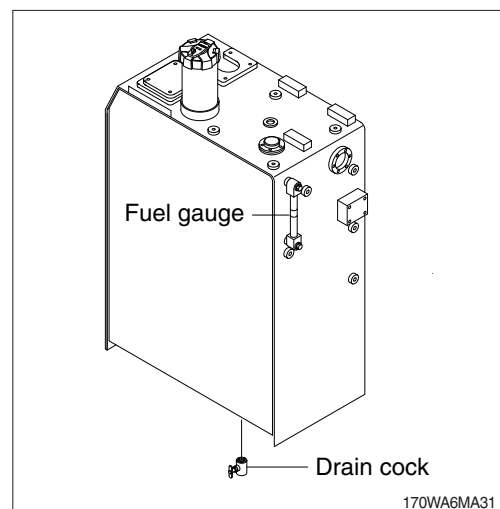


11) FUEL TANK

- ※ **Remove the strainer of the fuel tank and clean it if contaminated.**

- (1) Fill fuel tank fully to minimize water condensation and check the fuel gauge level or fuel level gauge before starting the machine.
 - (2) Drain the water and sediment in the fuel tank by opening the drain cock.
- ※ **Be sure to LOCK the cap of fuel tank.**

- ▲ **Stop the engine when refueling.**
All lights and flames shall be kept at a safe distance while refueling.



12) FUEL PRE-FILTER ELEMENT

- ※ Inspect or drain the collected water daily and replace the element every 1000hours.

(1) Drain water

- ① Open the drain valve to evacuate water for 10 seconds.
 - ② Close drain valve.
- ※ Do not use tools.
 - ※ Do not overtighten drain valve.

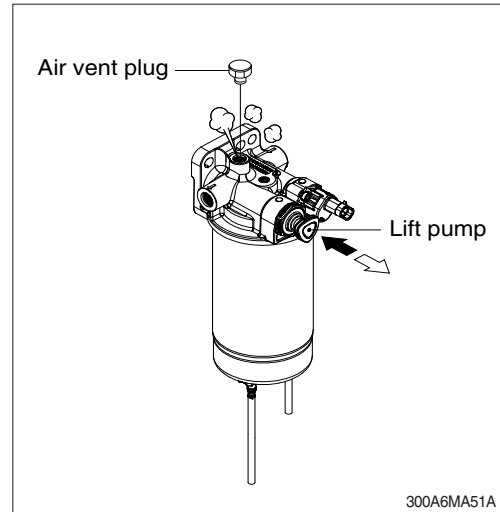
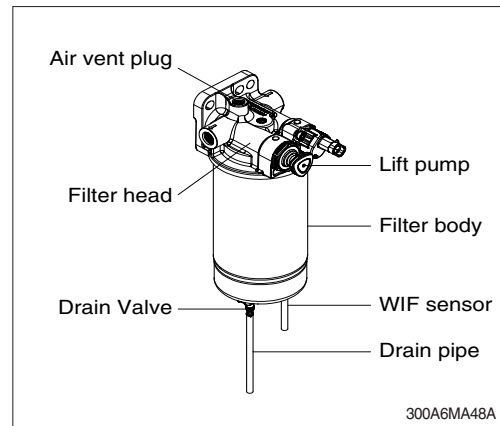
(2) Replace element

- ① Loosen the air vent plug and drain the unit of fuel. Follow "Drain water" instructions above.
- ② Remove the drain pipe and WIF sensor from filter body.
- ③ Remove the filter body from filter head.
- ④ Pre-fill a new filter body with fuel and lubricate gasket on the new filter body.
- ⑤ Install the filter on the filter head. Tighten the filter until the gasket contacts the filter head surface. Tighten the prefilter an additional 3/4 turn.
- ⑥ Connect the drain pipe and WIF sensor to filter body.

(3) Air bleeding

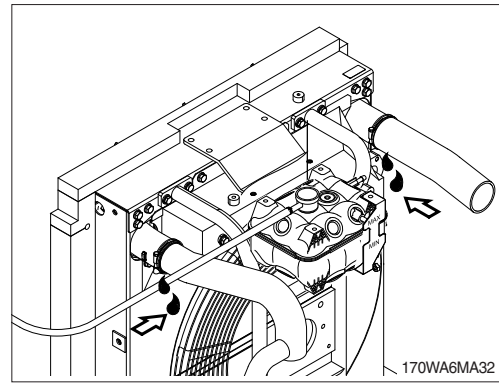
- ① Hand-prime the lift pump repeatedly until air bubbles comes out from air vent hole completely.
- ② Tighten the air vent plug.

▲ The fuel pump, high-pressure fuel lines, and fuel rail contain very high-pressure fuel. Do not loosen any fittings while the engine is running. Failure to comply may result in serious injury or death. Wait at least 10 minutes after shutting down the engine before loosening any fittings in the high-pressure fuel system to allow pressure to decrease.



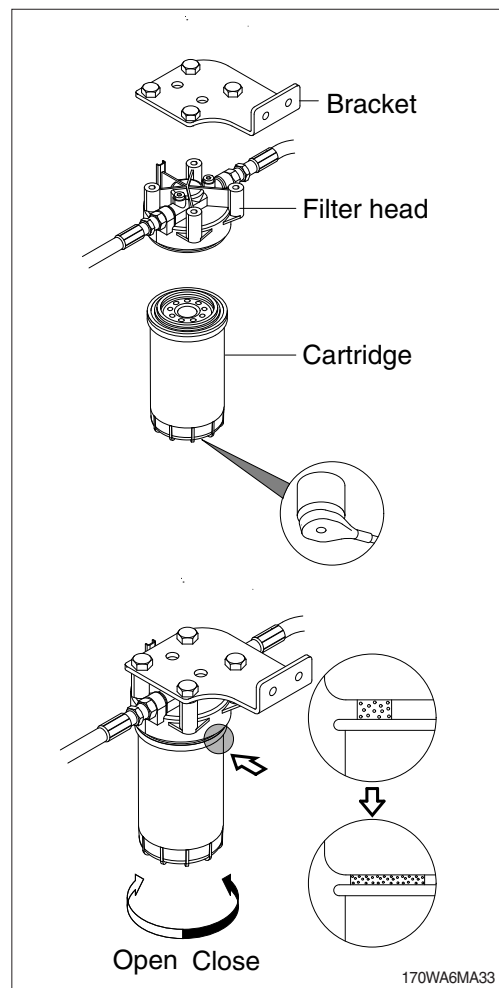
13) CHARGE AIR PIPING

- (1) Inspect the charge air piping and hoses for leaks, holes, cracks, or loose connections.
- (2) Tighten the hose clamps if necessary.



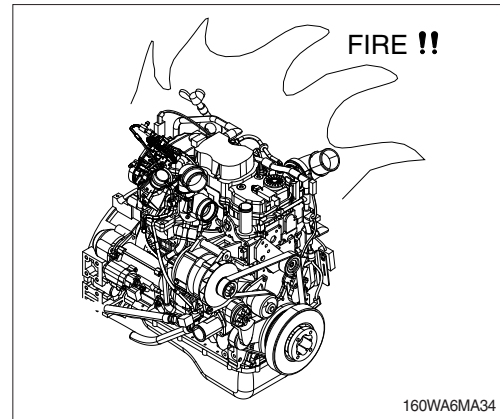
14) REPLACEMENT OF FUEL FILTER ELEMENT

- (1) Use 1" wrench, loosen and remove the element and clean the gasket surface.
 - ※ **Make sure O-ring does not stick to filter head. Remove O-ring with screwdriver if necessary.**
- (2) Lubricate the O-ring of a new element with clean lubricating oil.
- (3) Install the new element on the filter head. Tighten the new element until the gasket contacts the filter head surface. Tighten the new element an additional 3/4 turn after contact.
 - ※ **Mechanical overtightening can distort the threads or damage the filter element seal.**
- (4) Relieve the air after mounting.
 - ※ **Do not pre-fill the new element with fuel. The system must be primed after the new element is installed. Pre-filling the new element can result in debris entering the fuel system and damaging fuel system components.**
 - ※ **Check for fuel leakage after the engine starts. If air is in the fuel system, the engine will not start. Start engine after bleeding the air according to the method of bleeding air.**



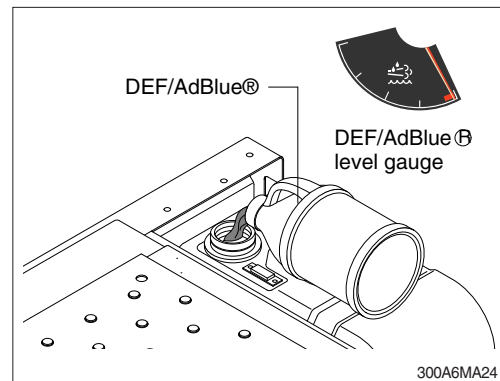
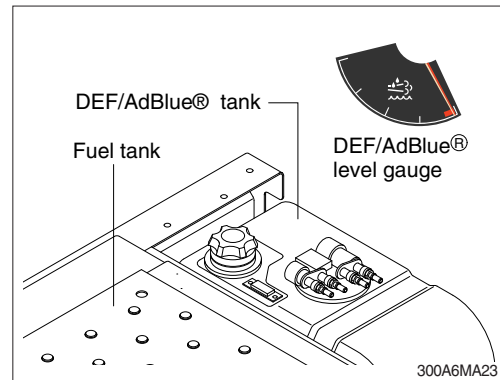
15) LEAKAGE OF FUEL

- ▲ Use care when cleaning the fuel hose, injection pump, fuel filter and other connections as the leakage from these parts can cause fire.



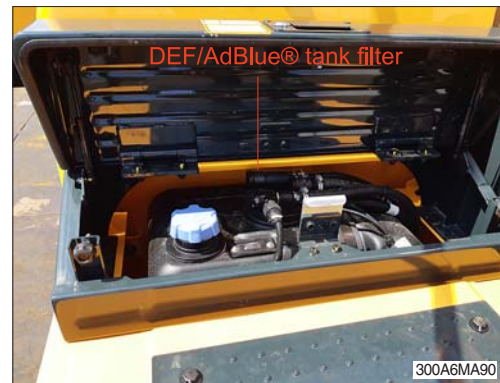
16) DEF/AdBlue® TANK

- (1) The DEF/AdBlue® tank level must be checked daily with DEF/AdBlue® level gauge.
- (2) If the DEF/AdBlue® level gauge is low, DEF/AdBlue® must be added.
 - ▲ It is unlawful to tamper with or remove any component of the aftertreatment system. It is also unlawful to use a catalyst solution that does not meet the specifications provided or operate the machine with no catalytic solution.
- (3) Do not pour DEF/AdBlue® overfull.
 - ※ Fill the tank with DEF/AdBlue® with key in the start position.
 - ※ Be careful when filling or refilling DEF/AdBlue® tank. Do not allow dust, sand or other contaminants to enter into the tank. Failure to comply could result in engine idle locking, derating, or engine stopping.



17) DEF/AdBlue® TANK FILTER

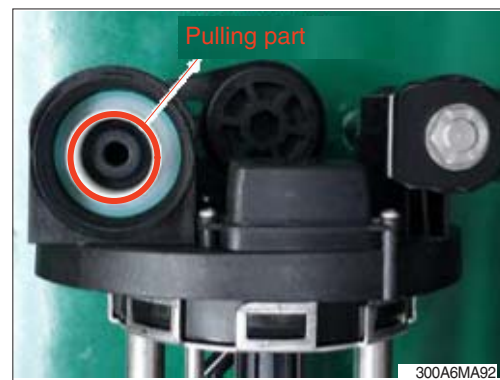
- (1) The filter is located on the top side of the tank cover.



- (2) Insert a hex wrench into the filter cover, rotate it anti-clockwise and remove the filter cover.



- (3) Pull out the filter by using a long nose pliers.



- (4) Replace with new filter.



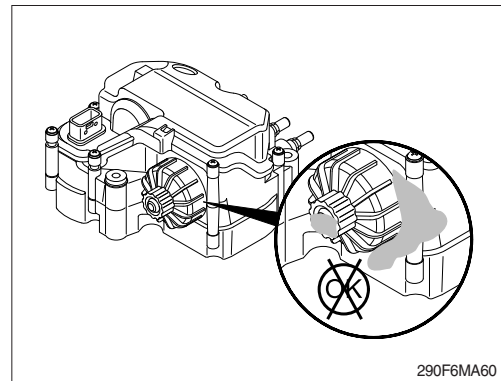
- (5) Place the filter cover and rotate the cover clockwise by using hex wrench.

- ※ Replace the filter every 2000 hours.
- ※ If the filter is reused, take care not to damage the thread part of the filter with long nose pliers. Use protection material such as a cloth etc to grip part of the filter by the long nose pliers.
- ※ Be careful not to cross-thread during reassembly.



18) DEF/AdBlue® SUPPLY MODULE FILTER

- (1) Inspect the area around the seal and vent of DEF/AdBlue® supply module filter cap for signs of leakage.
- ※ Turn DEF/AdBlue® the master switch mounted electric box.

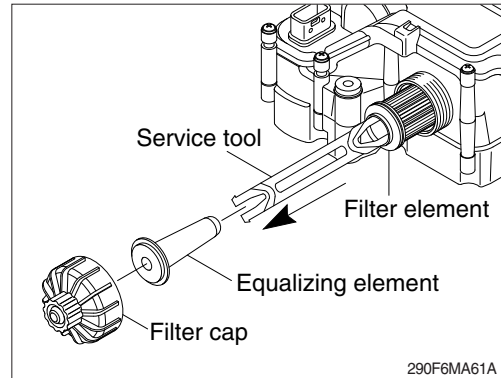


- (2) Unscrew the DEF/AdBlue® supply module filter cap.
A 27 mm wrench can be used on the cap to aid in removal.

- (3) Remove the filter equalizing element.

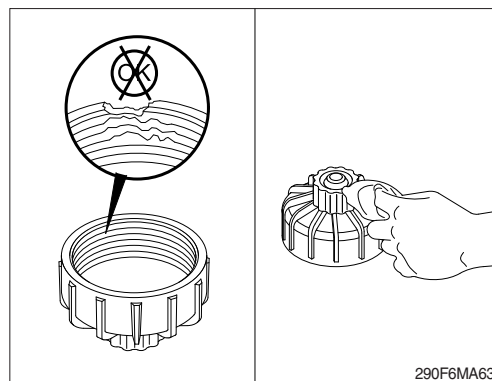
- (4) Remove the old filter element.
A disposable service tool is included with the filter to aid in filter removal. Use the appropriate end of the tool, depending on the color of the plastic on the filter.
When inserting the tool a "click" sound can be heard which indicates proper engagement with the filter.

- ※ If the filter element and equalizing element are removed from the aftertreatment DEF/AdBlue® tank, they must be discarded and replaced; regardless of condition.



(5) Clean and inspect the filter cap

- ① Clean the aftertreatment DEF/AdBlue® tank cap and threads on the DEF/AdBlue® tank with warm water and a clean cloth.
- ② Check the condition of the threads on the filter cap, if the threads are damaged, replace the filter cap.

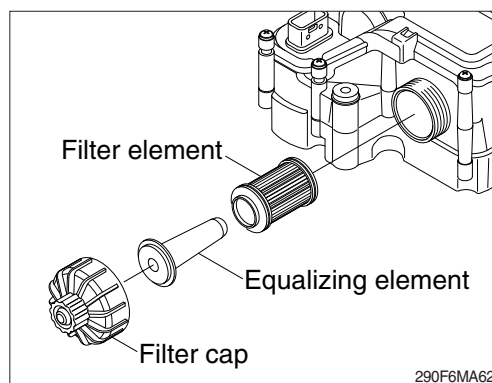


(6) Slide the filter equalizing element in to the new filter element.

(7) Insert the assembly into the aftertreatment DEF/AdBlue® supply module.

(8) Install and tighten the filter cap.

- Tightening torque : 2.0 kgf · m (14.5 lbf · ft)



19) ENGINE CLEANING

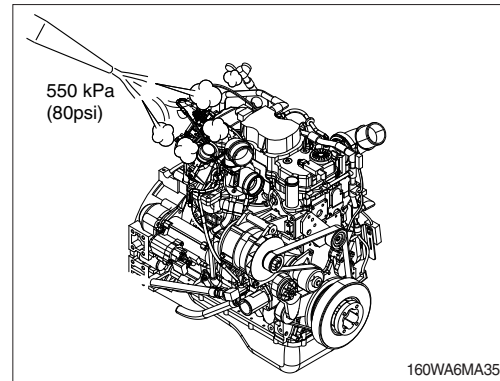
⚠ When using a steam cleaner, wear safety glasses or a face shield, as well as protective clothing. Hot steam can cause serious personal injury.

- ※ Turn OFF the master switch mounted electric box.**
- ※ Spraying high pressure steam near or into electrical components can cause damage.**

- (1) Steam is the recommended method of cleaning a dirty engine or a piece of equipment.
- (2) Protect all electrical components, openings, and wiring from the full force of the spray nozzle.
- (3) Components to protect include, but are not limited to the following:
 - Electrical components and connectors
 - Wiring harnesses
 - Electronic control module (ECM) and connectors.
 - Belts and hoses
 - Bearings (ball or taper roller)

△ Soap, solvent, or water ingress into air intake system can cause engine damage.

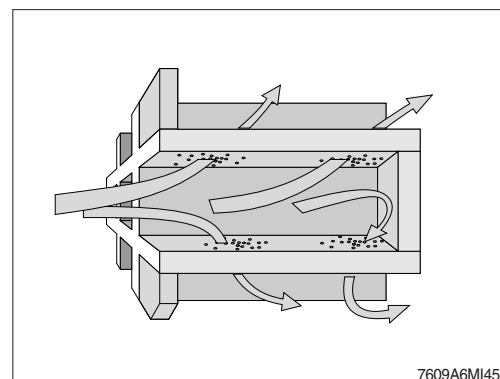
△ Do not directly spray or allow soap, solvent, or water to enter any passages, ports, or cowlings that lead to the engine air intake system.



20) DPF (diesel particulate filter) CLEANING

- (1) The diesel particulate filter can not be cleaned for maintenance purpose using conventional tools.
- (2) The diesel particulate filter needs to be cleaned and checked using an approved cleaning machine at a authorized service center.

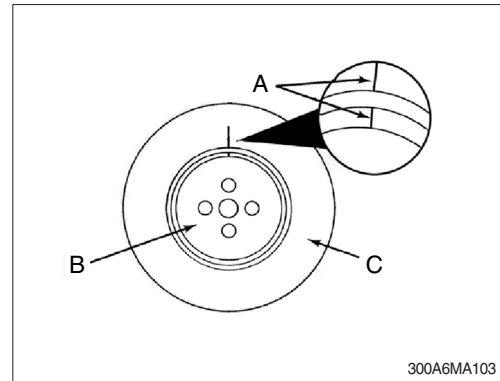
※ Please contact your HD Hyundai Construction Equipment service center or your local HD Hyundai Construction Equipment dealer.



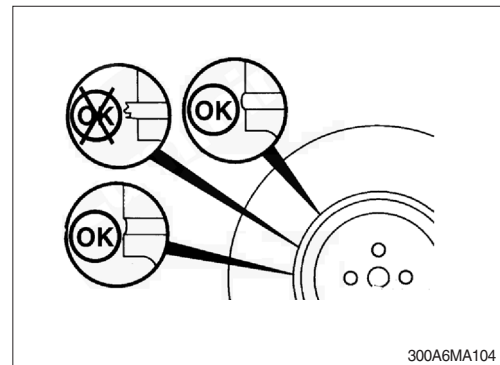
21) VIBRATION DAMPER

(1) Rubber

- ① Check the index lines (A) in the vibration damper hub (B) and the inertia member (C). If the lines are more than 1.59 mm (1/16 in) out of alignment, replace the vibration damper.



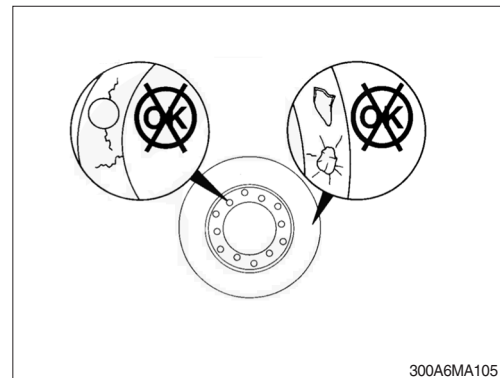
- ② Inspect the rubber member for deterioration. If pieces of rubber are missing or if the elastic member is more than 3.18 mm (1/8 in) below the metal surface, replace the damper.
- ③ Look for forward movement of the damper ring on the hub. Replace the vibration damper if any movement is detected.



(2) Viscous

※ The silicone fluid in the vibration damper will become solid after extended service and will make the damper inoperative. An inoperative vibration damper can cause major engine or drivetrain failures.

- ① Check the vibration damper for evidence of fluid loss, dents, and wobble. Inspect the vibration damper thickness for any deformation or raising of the damper cover plate.
- ② If any of these conditions are identified, contact your local HD Hyundai Construction Equipment dealer to replace the vibration damper when movement is detected.



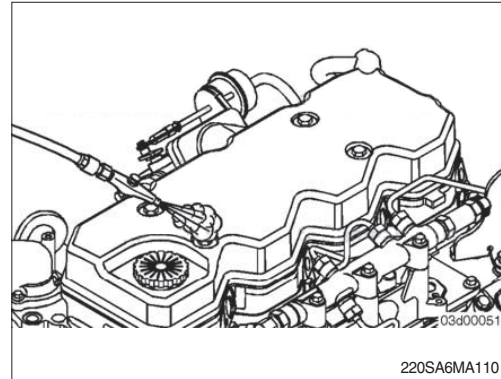
22) OVERHEAD SET ADJUSTMENT

This procedures are perform the repair shop.

※ Service tools

- Cummins barring tool, p/no. 3824591
- Feeler gauge

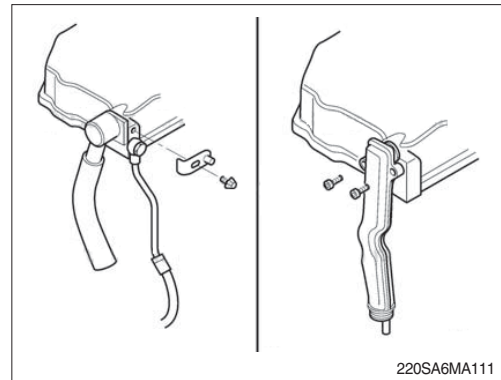
- (1) Prior to removing any components, use compressed air to remove any loose debris from around the mounting fasteners and sealing joints.



- (2) Disconnect the breather tube connection at the back of the rocker lever cover.

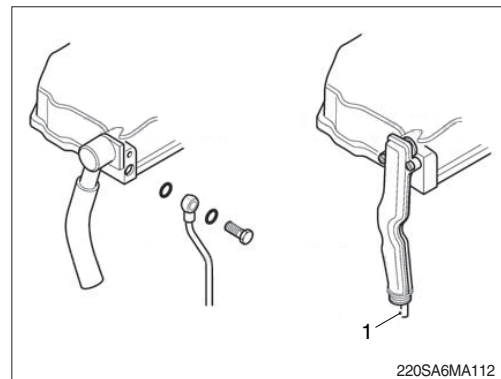
In general, two types of breather tube connections are used at the rocker lever cover.

- A clamping plate and capscrew hold the breather tube connection to the rocker lever cover. Remove the capscrew and clamping plate to disconnect the breather tube connection from the rocker lever cover.
- One or two capscrew(s) directly mount the breather tube connection to the rocker lever cover. Remove the capscrew(s) to disconnect the breather tube connection from the rocker lever cover.



- (3) If equipped, at the rear of the rocker lever, remove the banjo bolt and sealing washers connecting the breather oil drain line to the rocker lever cover.

※ Some engine the breather oil drain line is internal to the breathe connection tube (1).

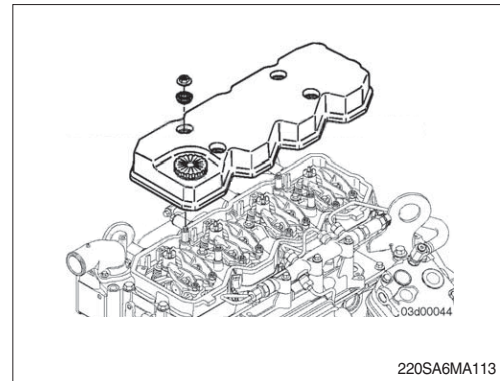


※ Do not remove the rocker lever gasket on engines in which the rocker lever cover gasket is fit into a groove at the base of the rocker lever cover. The gasket is reusable. Once the gasket is removed from the rocker lever cover, it must be replaced.

(4) Remove the mounting nuts and isolators from the rocker lever cover.

※ If equipped, it may be necessary to gently pry the breather tube connection from the back of the rocker lever cover while removing.

(5) Remove the rocker lever cover.

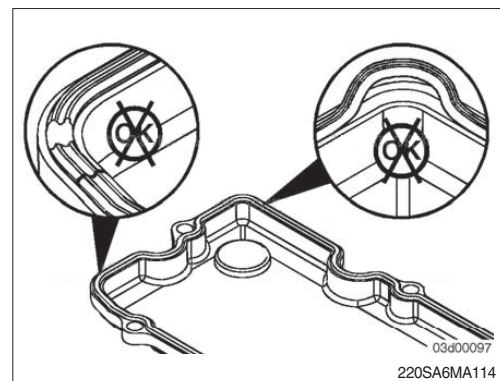


※ Check the gasket while it is installed in the valve cover. Once the gasket is removed from the cover it must be replaced.

(6) Check the gasket for cracks on the sealing surface.

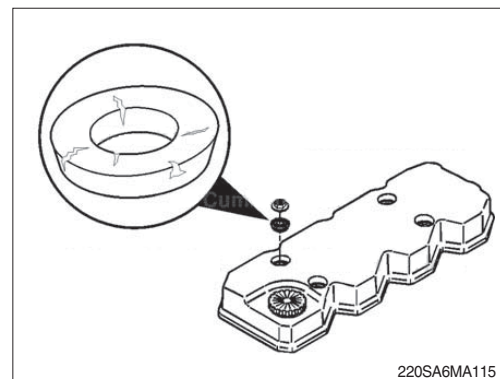
Replace the gasket if damage is present.

Replace the gasket if it is removed from the groove in the rocker lever cover.



(7) Inspect the rubber isolators for cracks.

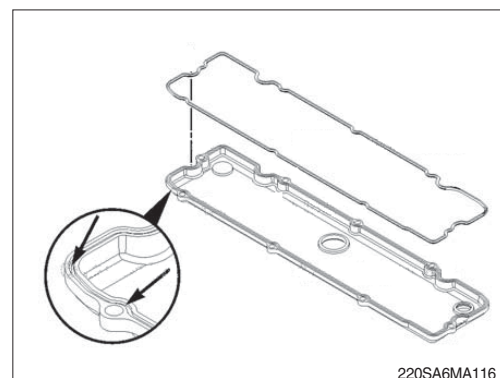
Replace if cracked or broken.



※ If the gasket has been removed from the rocker lever cover, a new gasket must be used.

(8) If replacing the press-in rocker lever gasket, the following installation procedure must be used.

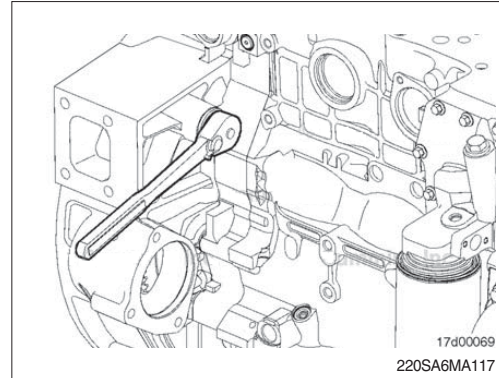
- Press the molded gasket into the corners of the rocker lever cover.
- Press the rest of the gasket into the rocker lever cover.



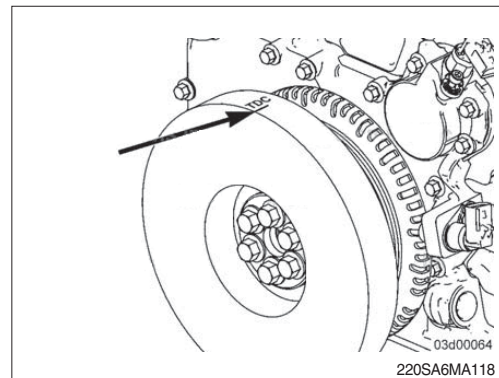
※ Engine coolant temperature must be less than 60 °C (140 °F).

- (9) Use the barring tool, to rotate the crankshaft until the number is at TDC.

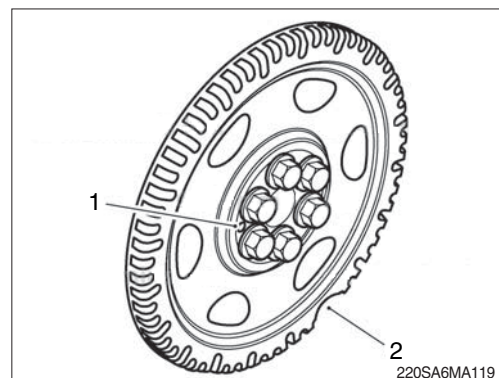
TDC can be determined by the following method.



- (10) Align the vibration damper/crankshaft speed indicator ring so the TDC indicator is at the 12 o'clock position. If both number 1 cylinder rocker levers are loose, move to the following steps. If both number 1 cylinder rocker levers are not loose, rotate the crankshaft 360 degrees.



※ If no TDC mark is present on either the vibration damper or the crankshaft speed indicator ring, align the large gap in the crankshaft speed indicator ring to the 5 o'clock position (2). The dowel pin will be visible in the 9 o'clock position (1). Check that both number 1 cylinder rocker levers are loose. If they are not loose, rotate the crankshaft 360 degrees and check again.

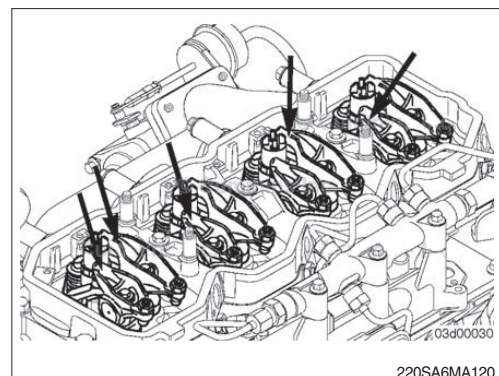


- (11) With the engine in this position, lash can be checked on the following rocker arms.

(E=exhaust, I=Intake)

Four-cylinder 1I, 1E, 2I and 3E)

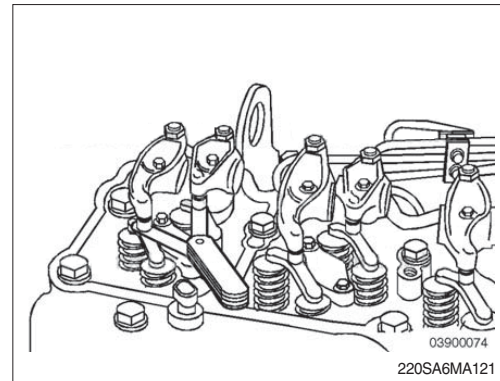
Six-cylinder 1I, 1E, 2I, 3E, 4I and 5E)



※ **Lash check limits**

Item		mm	inch
Intake	Min	0.152	0.006
	Max	0.381	0.015
Exhaust	Min	0.381	0.015
	Max	0.762	0.030

- ※ **Checking the overhead setting is usually performed as part of a troubleshooting procedure, and resetting is not required during checks, as long as the lash measurements are within the above ranges.**

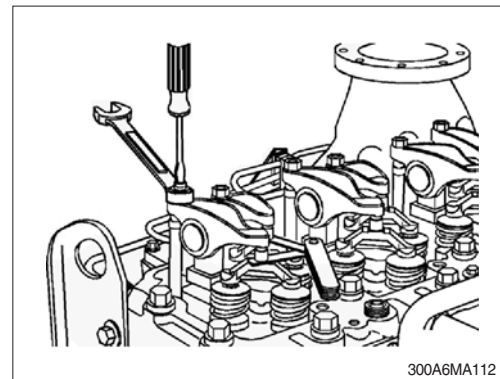


- ※ **The clearance is correct when some resistance is "felt" when the feeler gauge is slipped between the crosshead and the rocker lever socket.**

- (12) Measure lash by inserting a feeler gauge between the crosshead and the rocker lever socket. If the lash measurement is out of specification, loosen the locknut, and adjust the lash to nominal specifications.

Lash specifications

Item	mm	inch
Intake	0.254	0.010
Exhaust	0.508	0.020



- (13) Tighten the locknut.

Tightening torque : 2.4 kgf · m (17.4 lbf · ft)

- (14) Use the barring tool, to rotate the crankshaft 360 degrees.

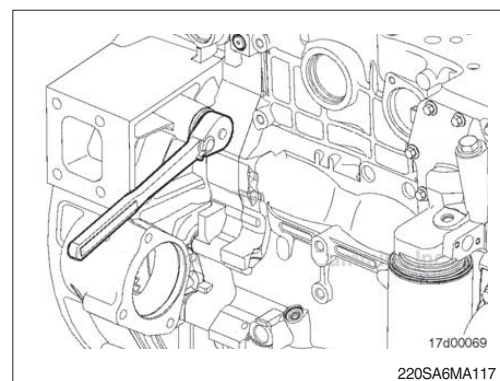
Following the same steps and specifications as previously stated, measure lash for the following rockers.

(E=exhaust, I=Intake)

Four-cylinder 2E, 3I, 4E and 4I)

Six-cylinder 2E, 3I, 4E, 5I, 6I and 6E)

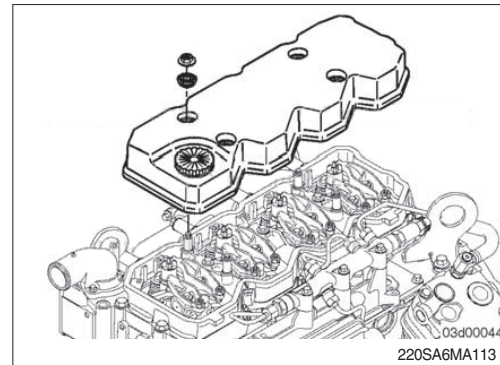
Reset if out of specification.



(15) Stud mounted rocker lever cover

- ① Install the rocker lever cover over the mounting capscrews.
- ② Install the isolators and mounting nuts.
- ③ Tighten the mounting nuts.

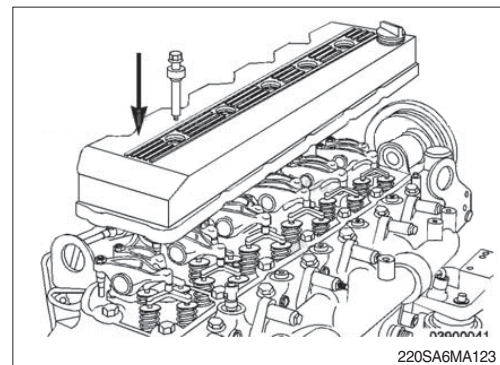
Tightening torque : 2.4 kgf · m (17.4 lbf · ft)



(16) Capscrew mounted rocker lever cover

- ① Install the rocker lever cover.
- ② Install the mounting capscrews and isolators.
- ③ Tighten the mounting capscrews.

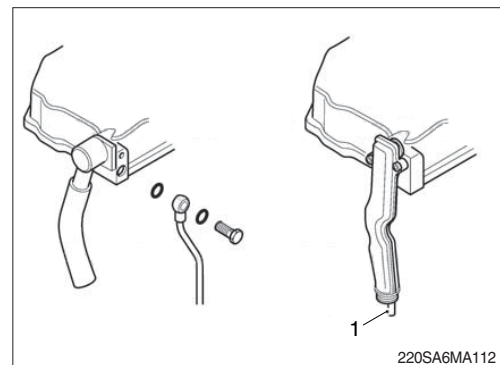
Tightening torque : 2.4 kgf · m (17.4 lbf · ft)



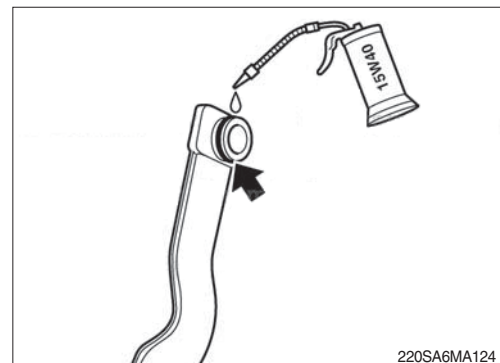
- (17) If equipped, at the rear of the rocker lever cover, install the banjo bolt and sealing washers connecting the breather oil drain line to the rocker lever cover.

Tightening torque : 1.2 kgf · m (8.7 lbf · ft)

※ **Some engine the breather oil drain line is internal to the breathe connection tube (1).**



- (18) Prior to connecting the breather connection tube to the rocker lever cover, apply clean engine oil to the O-ring located on the breather tube connection.



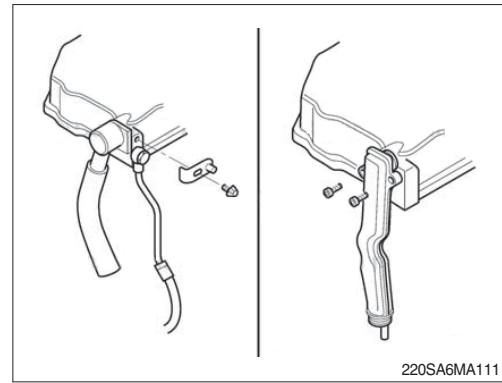
(19) Connect the breather tube connection to the rocker lever cover.

In general, two types of breather tube connections are used at the rocker lever cover.

- A clamping plate and capscrew hole the breather tube connection to the rocker lever cover. Remove the capscrew and clamping plate to disconnect the breather tube connection from the rocker lever cover.
- One or two capscrew(s) directly mount the breather tube connection to the rocker lever cover. Remove the capscrew(s) to disconnect the breather tube connection from the rocker lever cover.

(20) Tighten the capscrew(s).

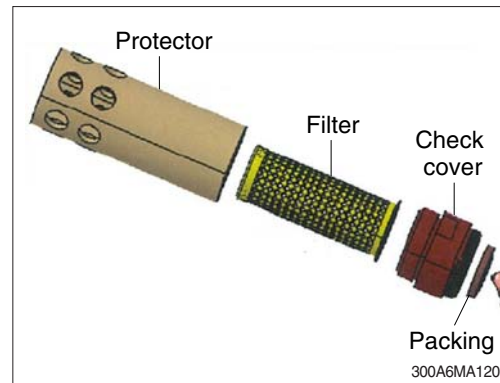
Tightening torque : 1.0 kgf · m (7.2 lbf · ft)



23) FUEL FILLER PUMP FILTER

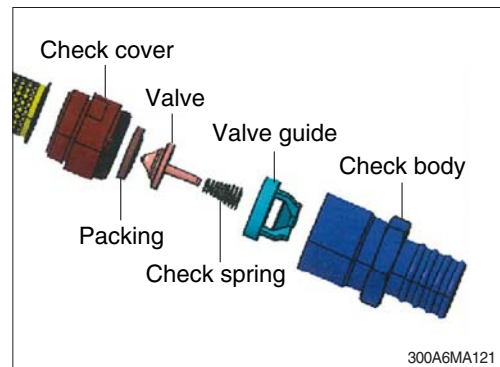
Clean the filter periodically as followings.

- (1) Clean the filter when it is required by visual inspection.
 - (2) Replace the filter when it is permanently damaged.
- ※ Clean with fuel or compressed, water should not be mixed.
 - ※ The structure can be loosened by hand.



(3) Check valve

- ① Except for maintenance, the check valve must have been equipped to the hose at all times.
- ② Clean or replace check valve when foreign material is found in valve.

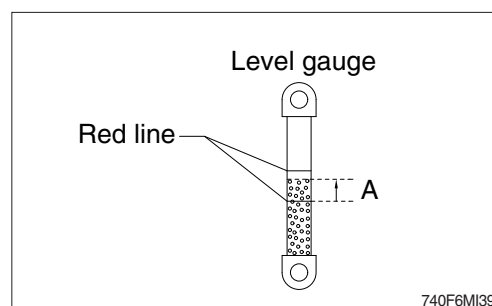
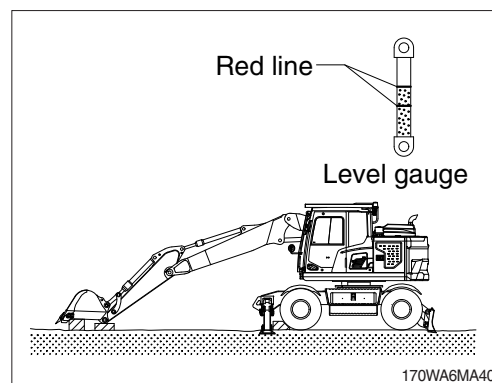


24) HYDRAULIC OIL CHECK

- (1) Position the machine as shown in the illustration on the right. Please stop the engine and wait for about 5 minutes.
- (2) Check the oil level at the level gauge of hydraulic oil tank.
- (3) The oil level is normal if the oil is between the red lines. The oil level depends on the temperature of the hydraulic oil. Refer to the height (A) in the below table to check the level gauge.

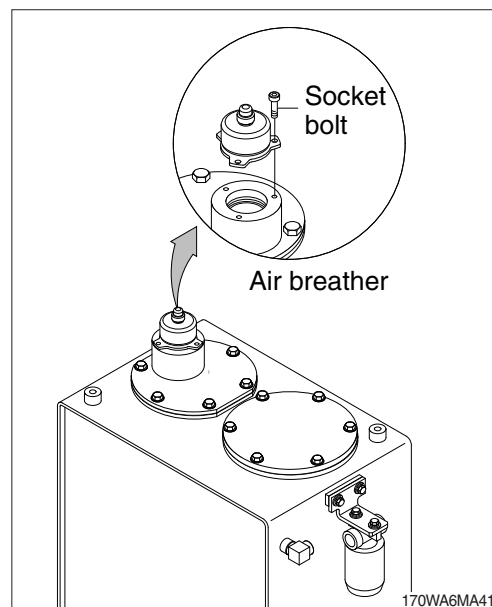
Temperature (°C)		Height A (mm)	
°C	mm	°F	inch
0	32	15	0.6
10	50	25	1.0
20	68	30	1.2
30	86	35	1.4
40	104	40	1.6

- ※ Refer to page 3-31 for checking the temperature of the hydraulic oil.
- ※ Add the hydraulic oil, if necessary.



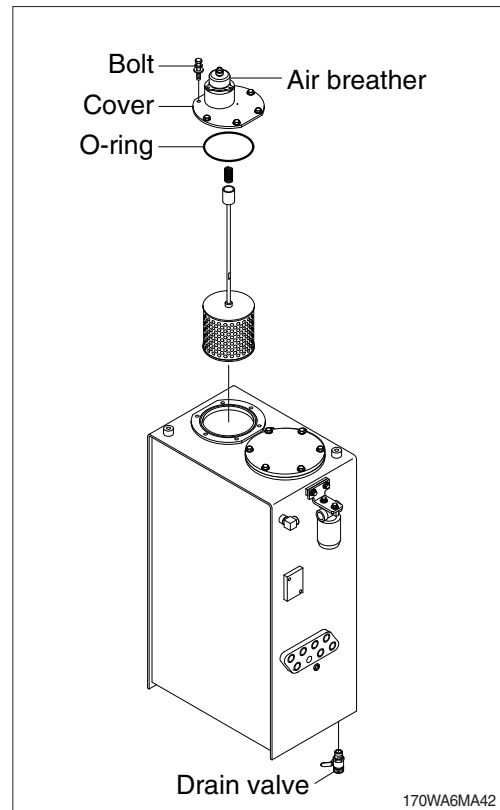
25) FILLING HYDRAULIC OIL

- (1) Position the machine like the hydraulic oil check. Then stop engine.
- (2) Relieve the pressure in the tank by pushing the top of the air breather.
- (3) Loosen the socket bolts and remove the air breather on the top of oil tank and fill the oil to the specified level.
 - Tightening torque : $4.05 \pm 0.8 \text{ kgf} \cdot \text{m}$
($29.3 \pm 5.8 \text{ lbf} \cdot \text{ft}$)
- (4) Start engine after filling and operate the work equipment several times.
- (5) Check the oil level at the level check position after engine stops.



26) CHANGE HYDRAULIC OIL

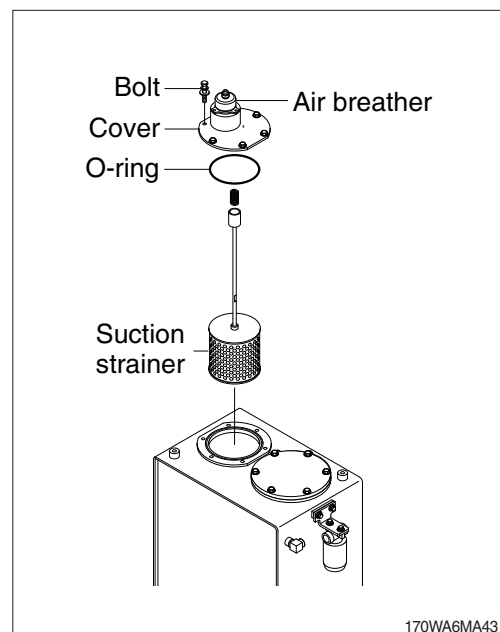
- (1) Position the machine like the hydraulic oil check. Then stop engine.
 - (2) Relieve the pressure in the tank by pushing the top of the air breather.
 - (3) Remove the cover.
 - Tightening torque : $6.9 \pm 1.4 \text{ kgf} \cdot \text{m}$
($50 \pm 10 \text{ lbf} \cdot \text{ft}$)
 - (4) Prepare a suitable container with a capacity of 250 ℓ (66 U.S. gal).
 - (5) To drain the oil open the drain valve at the bottom of the oil tank.
 - (6) Close the drain valve and fill proper amount of recommended oil.
 - (7) Put the breather in the right position.
 - (8) To bleed air from hydraulic pump loosen the air breather at top of hydraulic pump assembly.
 - (9) Start engine and run continually. Release the air by full stroke of each control lever.
- ※ In case of injecting HBHO (HD Hyundai Construction Equipment Bio Hydraulic Oil) to machines that have formerly used different hydraulic oil, the proportion of residual oil must not exceed 2 %
- ※ Do not mix any other Bio oil, use only HBHO as bio oil. If changing to Bio oil, contact your local HD Hyundai Construction Equipment dealer.



27) CLEAN SUCTION STRAINER

Clean suction stainer as follows.

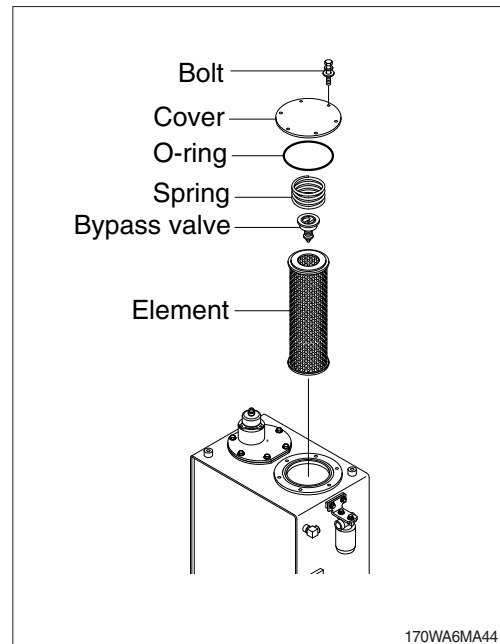
- (1) Remove the cover.
 - Tightening torque : $6.9 \pm 1.4 \text{ kgf} \cdot \text{m}$
($50 \pm 10 \text{ lbf} \cdot \text{ft}$)
 - (2) Pull out the strainer in the tank.
 - (3) Wash the suction strainer with gasoline or cleaning oil (mineral spirits).
 - (4) Replace the suction strainer if it is damaged.
 - (5) Assemble with reverse order of disassembly. Be sure to install a new O-ring.
- ※ Loosen bolts on the cover slowly as the cover has spring force applied. This will prevent cover from popping off without notice.



28) REPLACEMENT OF RETURN FILTER

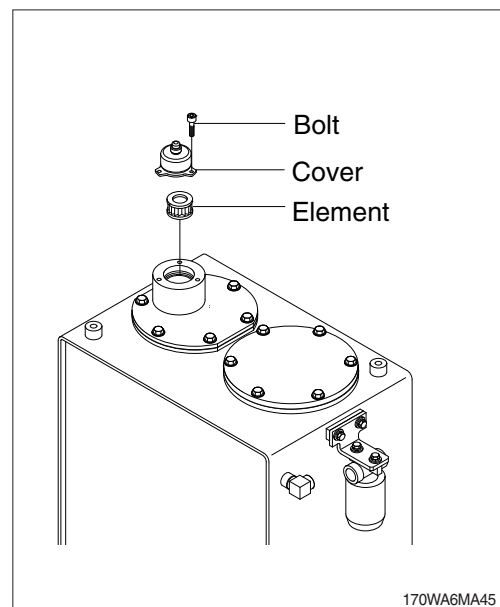
Replace return filter as follows.

- (1) Remove the cover.
- (2) Remove the spring, by-pass valve and return filter in the tank.
- (3) Replace the return filter with a new one.
- (4) Reassemble by reverse order of disassembly.
 - Tightening torque : $6.9 \pm 1.4 \text{ kgf} \cdot \text{m}$
($50 \pm 10 \text{ lbf} \cdot \text{ft}$)



29) REPLACEMENT OF ELEMENT IN HYDRAULIC TANK BREATHER

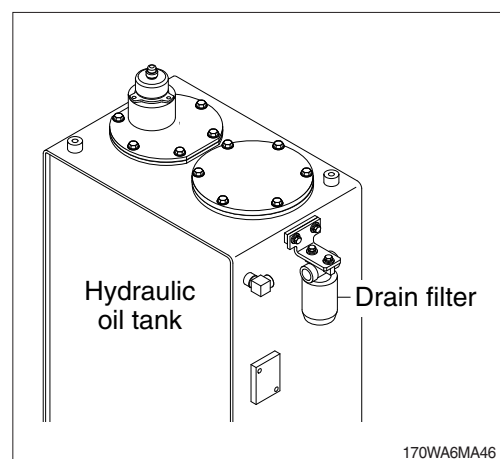
- (1) Relieve the pressure in the tank by pushing the top of the air breather.
- (2) Loosen the bolt and remove the cover.
- (3) Pull out the air breather element.
- (4) Replace the air breather element with a new one.
- (5) Reassemble by reverse order of disassembly.
 - Tightening torque : $0.8 \sim 1.0 \text{ kgf} \cdot \text{m}$
($5.9 \sim 7.4 \text{ lbf} \cdot \text{ft}$)



30) REPLACEMENT OF DRAIN FILTER

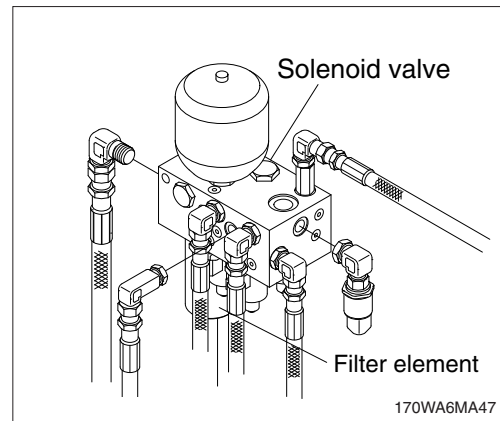
Clean the dust around filter and replace with new one after removing the cartridge.

- ※ Tighten about 2/3 turn more after the gasket of cartridge contacts seal side of filter body.
- ※ Change drain filter after initial 250 hours of operation. Thereafter, change drain filter every 1000 hours.



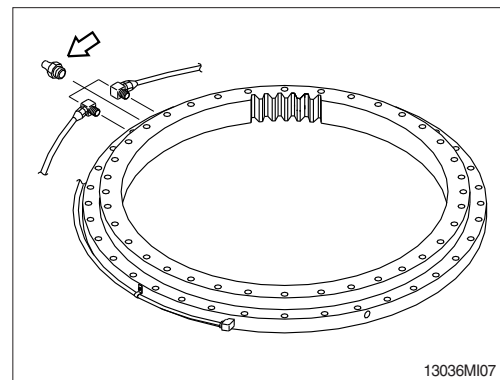
31) REPLACEMENT OF PILOT LINE FILTER

- (1) Loosen the nut positioned on the filter body.
 - (2) Pull out the filter element and clean filter housing.
 - (3) Install the new element and tighten using specified torque.
 - Tightening torque : 2.5 kgf·m (18.1 lbf·ft)
- ※ **Change the element after initial 250 hours of operation. Thereafter, change the element every 1000 hours.**



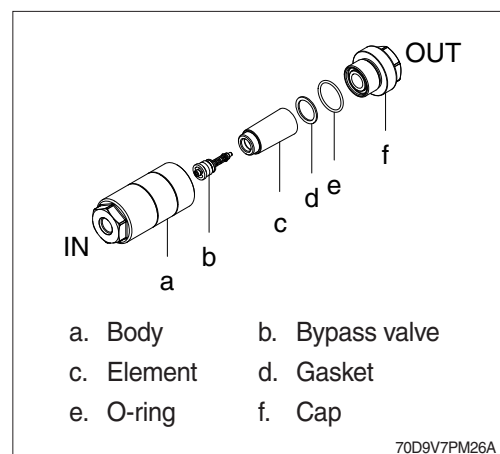
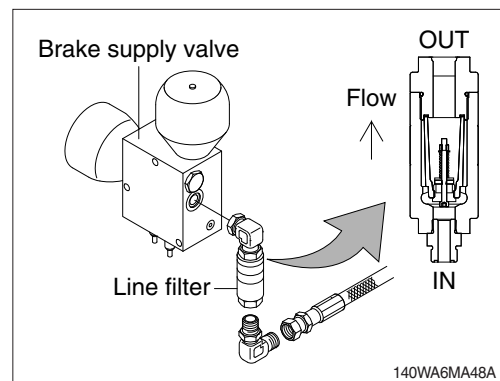
32) LUBRICATE SWING BEARING

- (1) Grease at the 3 fittings shown in the photo.
- ※ **Lubricate every 250 hours.**



33) CLEANING BSV LINE FILTER

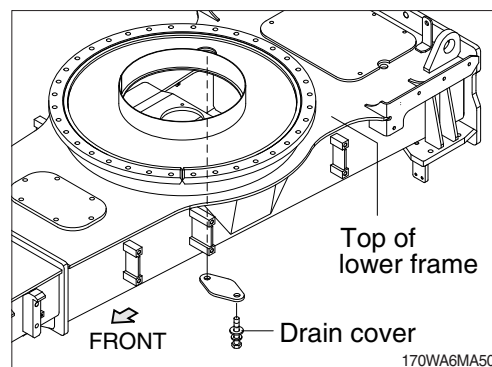
- (1) To release the brake system pressure, operate the brake pedal 2 ~ 3 times while the key is ON.
 - (2) Loosen the line filter on connectors.
 - (3) Unscrew the cap (f).
 - (4) Remove the element (c).
 - (5) Clean the element in hydraulic oil and use compressed air.
- ※ **If the O-ring or the gasket is damaged, replace the part with the new one.**
- (6) In case of replacement, insert the new element after cleaning with hydraulic oil and compressed air.
 - (7) Screw the cap.
 - Tightening torque : 15.3 kgf·m (110 lbf·ft)
 - (8) Tighten the line filter to connectors.
 - Tightening torque : 6 kgf·m (43.4 lbf·ft)
 - (9) Start the engine for a few minutes. Make sure there are no leaks.



34) SWING GEAR AND PINION

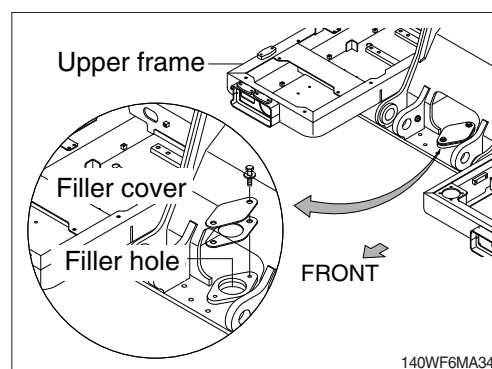
(1) Drain old grease

- ① Remove under cover of lower frame.
- ② Remove drain cover of lower frame.
- ③ Remove filler cover of upper frame.
- ④ Operate full turn (360°) of swing several times.



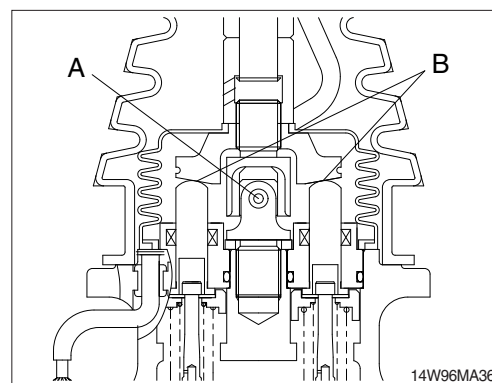
(2) Refill new grease

- ① Install drain cover.
 - ② Fill with new grease.
 - ③ Install filler cover.
- Capacity : 15.8 kg (34.8 lb)



35) LUBRICATE RCV LEVER

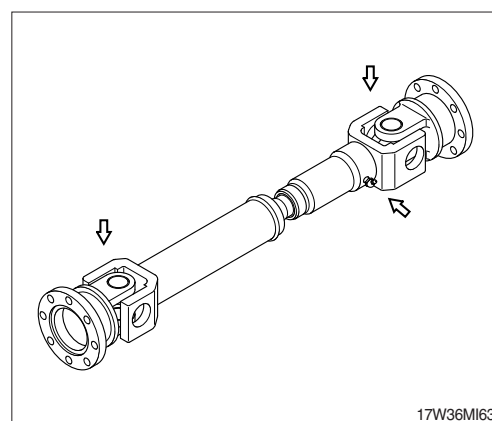
Remove the bellows and with a grease gun grease the joint part (A) and sliding parts (B).



36) LUBRICATE

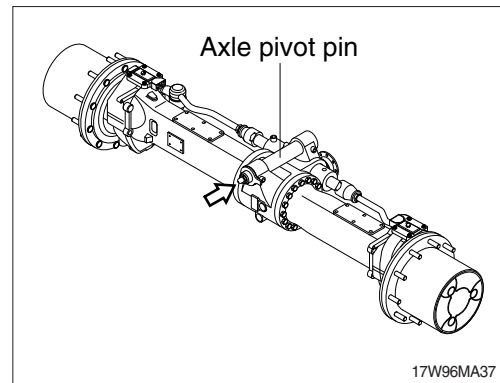
(1) Drive shaft

- ① Front drive shaft : 3 point
- ② Rear drive shaft : 3 point

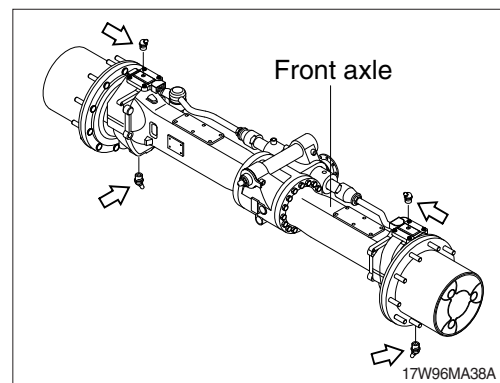


(2) Axle

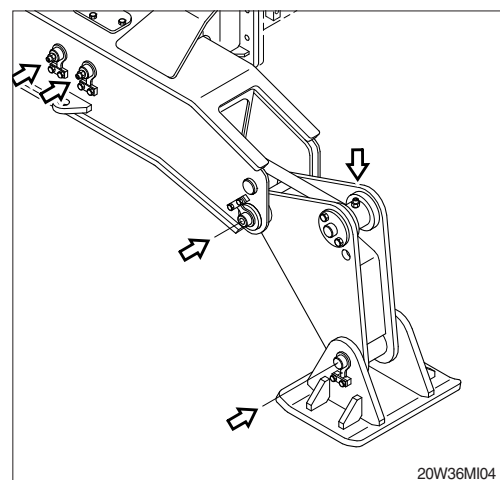
① Front axle : 1 point



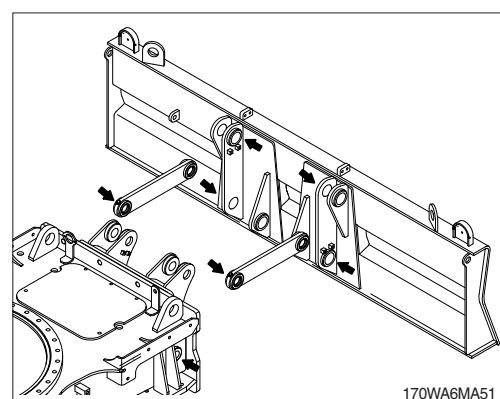
(3) Steering case : 4 point



(4) Outrigger : 8 point



(5) Dozer blade : 12 point



37) TIRE

(1) Air pressure

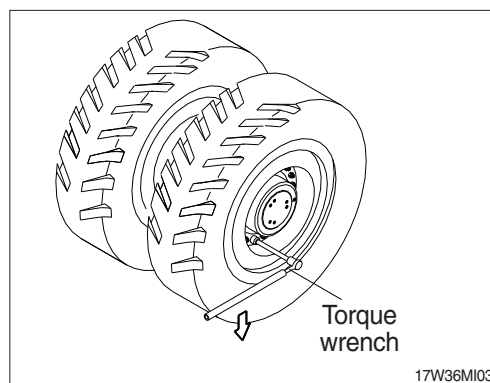
It is important to keep air pressure properly for maximizing tire life. Both excessive and insufficient air pressure of tires should be avoided not to damage tires.

Specification : 7.0 kgf/cm² (100 psi)

(2) Handling of tire

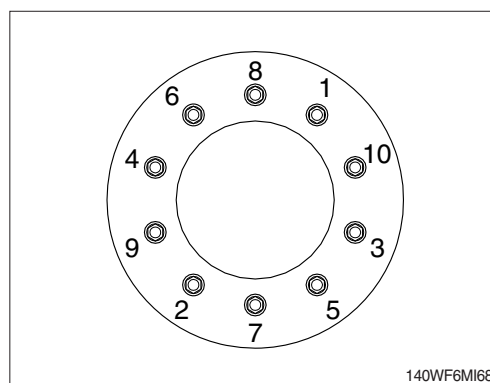
① Removal of tire

- Lift the main body until a tire separate from the ground, and place the block under front and rear axle.
- Loosen wheel nut with torque wrench and remove tire.



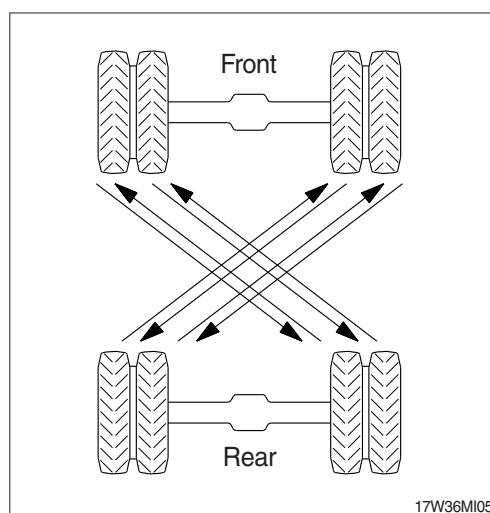
② Installation of tire

- Coat some grease on wheel stud and nut screw.
- Install the tires and tighten a nut slightly and get down a tire on the ground, and then tighten the torque in the order as figure.
 - Tightening torque : 60 ± 5 kgf · m
(433 ± 36.2 lbf · ft)



③ Position change of tire

- Tire is worn out differently part by part according to installing position, so change position regularly as figure.
- ※ **Keep air pressure at standard.**
- ※ **Use same pattern of groove and same maker's tire.**
- ※ **Always check the tire before operation.**

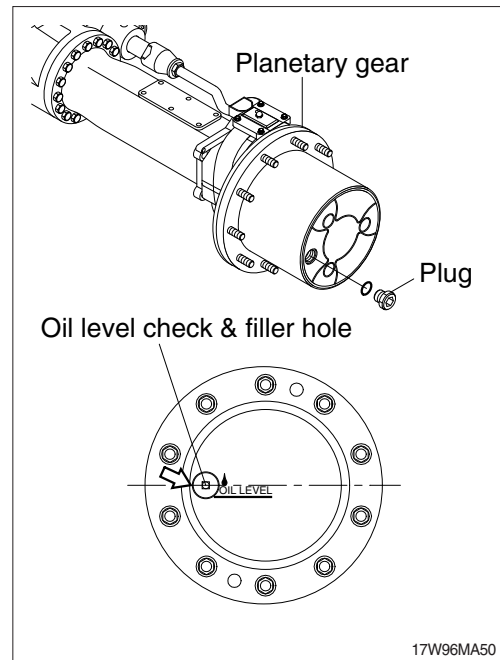


(3) Tire size

Specification : 10.00×20 - 14PR

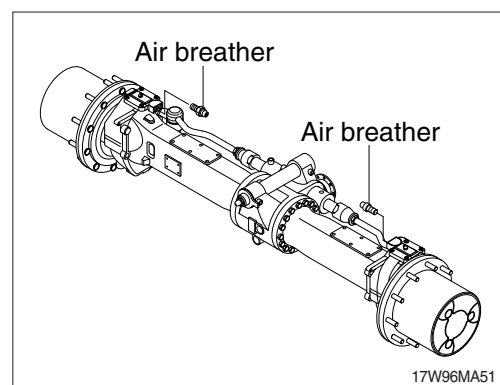
38) CHECK AND SUPPLYING AXLE PLANETARY GEAR OIL

- (1) Park the machine on the flat ground.
- (2) Remove the plug and check the oil amount.
※ Set the oil level check line of planetary gear in parallel to the around.
- (3) If the oil level is below the plug hole, supply oil through plug hole.
- (4) After checking, install plug.

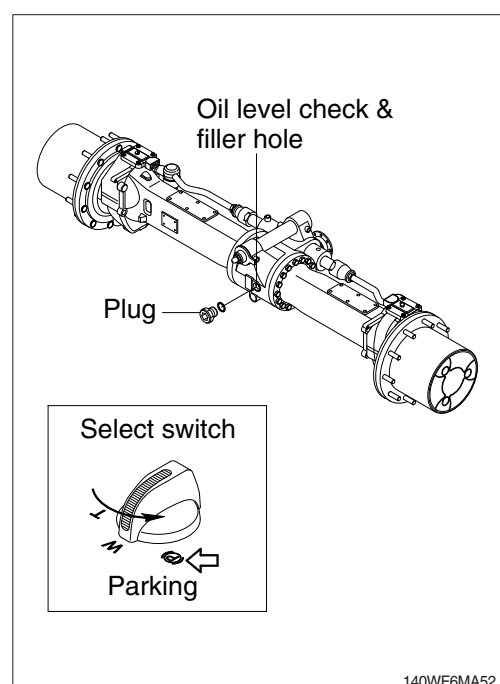


39) CHECK AND SUPPLYING AXLE DIFFERENTIAL GEAR OIL

- (1) Park the machine on the flat ground.
- (2) Open the axle air breather to relieve internal air pressure.



- (3) Remove the plug and check the oil amount.
 If the oil level is at the hole of the plug, it is normal.
 - (4) If the oil level is below the plug hole, supply oil through plug hole.
- ▲ When checking the oil level, set the select switch to parking position.**
- ▲ As the machine is hot after operation, wait until the oil temperature has dropped.**

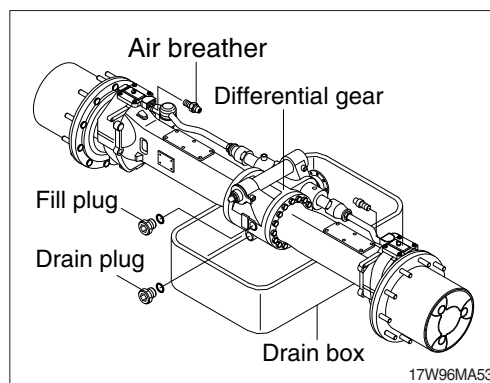


40) CHANGE THE AXLE OIL

- (1) Place a drain box under drain plug to catch oil.
- (2) Remove the air breather to relieve internal pressure.

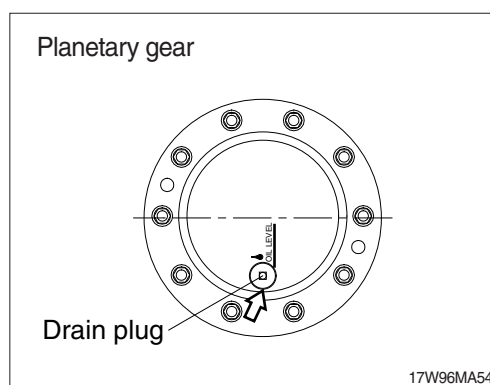
(3) Drain oil the differential gear oil

- ① Remove the filling plug and remove the drain plug to drain oil off.
- ② Wash drain plug and install it.



(4) Drain planetary gear oil

- ① Drain oil by removing drain plug.
- ※ The drain plug should be facing the ground.



- (5) Supply oil into the differential gear and the planetary gear.

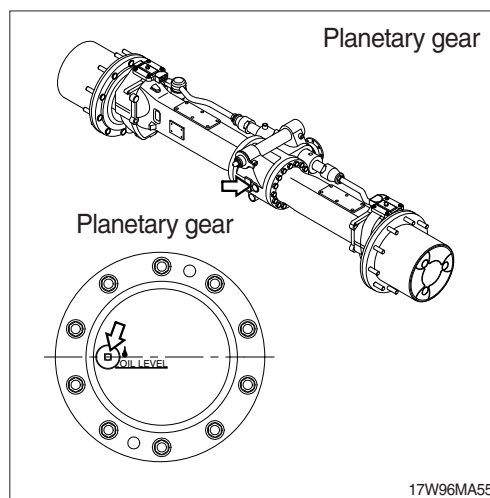
· Oil amount

Description	Capacity
Front axle differential gear oil	10.5 ℓ (2.77 U.S. gal)
Rear axle differential gear oil	12.5 ℓ (3.30 U.S. gal)
Axle planetary gear oil	2.5 ℓ (0.66 U.S. gal)

- (6) Supply oil until it overflows from the oil filler, then install the plug.

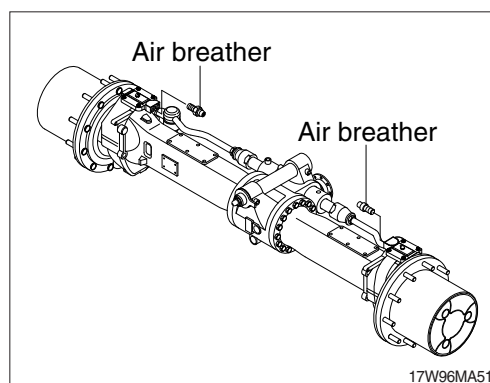
▲ As the machine is hot after operation, wait until the temperature has dropped.

- ※ If a work requires frequent use of brake, replace it earlier than normal change interval.



41) CLEANING AXLE BREATHER

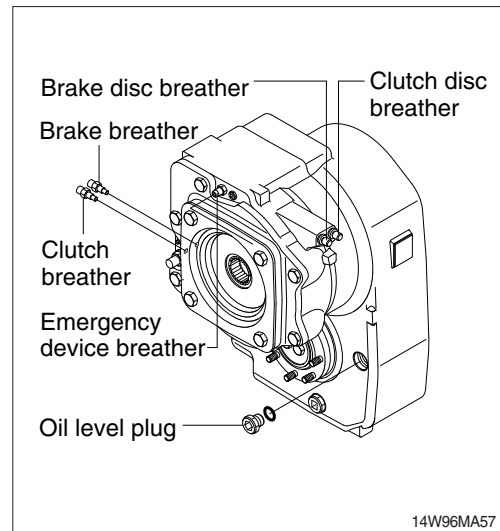
- (1) Remove dust or debris around the breather.
- (2) Remove the breather and wash it with cleaning oil.



42) CHECK AND SUPPLYING TRANSMISSION OIL

- (1) Park the machine on the flat ground.
- (2) Open the transmission air breather to relieve internal air pressure.
- (3) Remove the plug and check the oil amount.
If the oil level is at the hole of the plug, it is normal.
- (4) If the oil level is below the plug hole, supply oil through a plug hole.

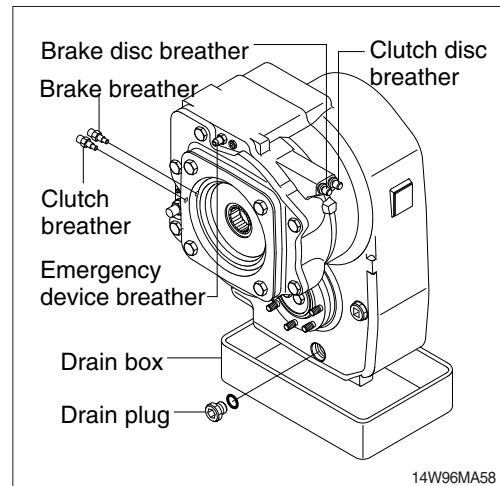
▲ As the machine is hot after operation, wait until the oil temperature has dropped.



43) CHANGE THE TRANSMISSION OIL

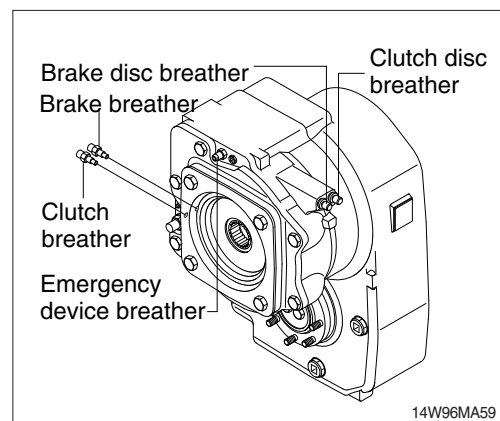
- (1) Prepare a suitable container under drain plug to catch oil.
- (2) Open the transmission air breather to relieve internal air pressure.
- (3) Remove the drain plug to drain oil.
- (4) Wash drain plug and install it.
- (5) Supply oil into the transmission case.
· Oil amount : 2.5 ℓ (0.66 U.S. gal)

▲ As the machine is hot after operation, wait until the temperature has dropped.



44) CLEANING TRANSMISSION AIR BREATHER

- (1) Remove dust or debris around the air breather.
- (2) Remove the air breather and wash it with cleaning oil.



45) REPLACEMENT OF BUCKET

△ When knocking the pin in with a hammer, metal particles may fly and cause serious injury, particularly if they get into your eyes. When carrying out this operation, always wear goggles, helmet, gloves, and other protective equipment.

※ When the bucket is removed, place it in a stable condition.

※ When performing joint work, make sure to signal clearly to each other and work carefully to avoid serious injury.

(1) Lower the bucket on the ground as shown in the illustration on the top right.

(2) Lock the safety knob to the LOCK position and stop the engine.

(3) Remove the stopper bolts (1) and nuts (2), then remove pins (3, 4) and remove the bucket.

※ When removing the pins, place the bucket so that it is in light contact with the ground.

※ If the bucket is lowered strongly to the ground, the resistance will be increased and it will be difficult to remove the pins.

※ After removing the pins, make sure that they do not become contaminated with sand or mud and that the seals of bushings on both sides do not become damaged.

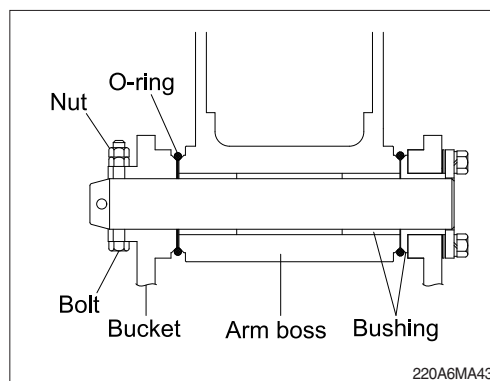
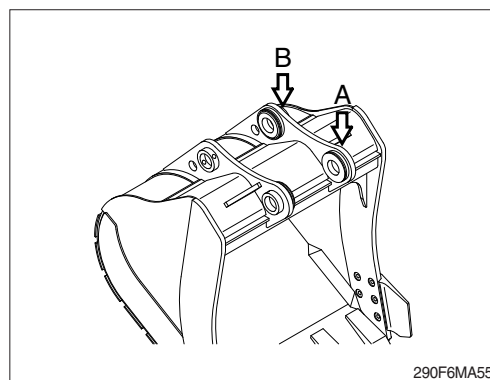
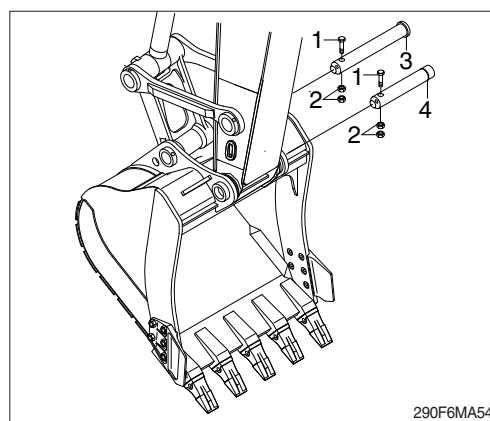
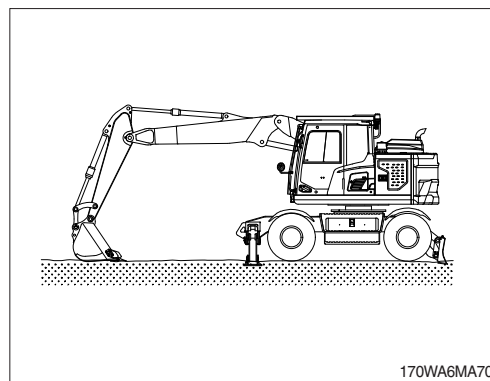
(4) Align the arm with holes (A) and the link with holes (B), then coat with grease and install pins (3, 4)

※ When installing the bucket, the O-rings are easily damaged, so fit the O-rings on the boss of the bucket as shown in the picture.

After hitting the pin, move the O-ring down to the regular groove.

(5) Install the stopper bolt (1) and nuts (2) for each pin, then grease the pin.

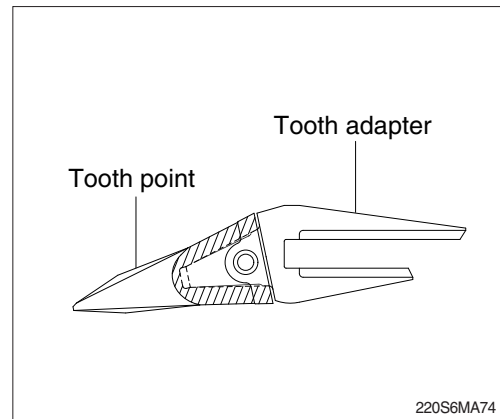
· Tightening torque : $29.7 \pm 4.5 \text{ kgf} \cdot \text{m}$
 $(215 \pm 32.5 \text{ lbf} \cdot \text{ft})$



46) REPLACEMENT OF BUCKET TOOTH

(1) Timing of replacement

- ① Check wearing condition as shown in the illustration and replace tooth point before adapter starts to wear.
- ② In case of excessive use and tooth adapter has worn excessively, replacement may become impossible.



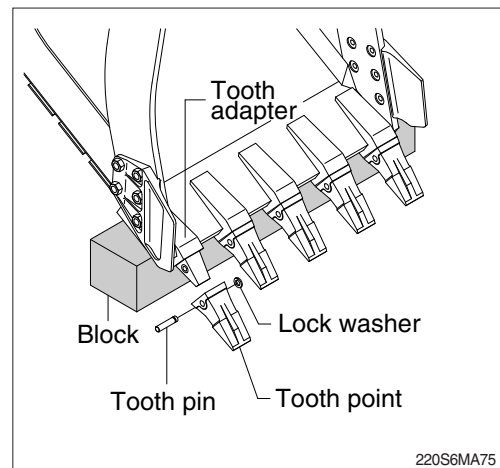
(2) Instructions for replacement

- ① Pull out pin by striking pin with punch or hammer, avoiding damage to lock washer.
- ② Remove dust and mud from surface of tooth adapter by using knife.
- ③ Place lock washer in its proper place, and fit tooth point to adapter.
- ④ Insert pin until lock washer is positioned at tooth pin groove.

▲ Serious injury or death can result from bucket falling.

▲ Block the bucket before changing tooth points or side cutters.

▲ The operator should wear clothes and personal protection gear that are appropriate for the work environment. Protects the eyes from dust, particles and airborne materials with a protection gear like goggle.



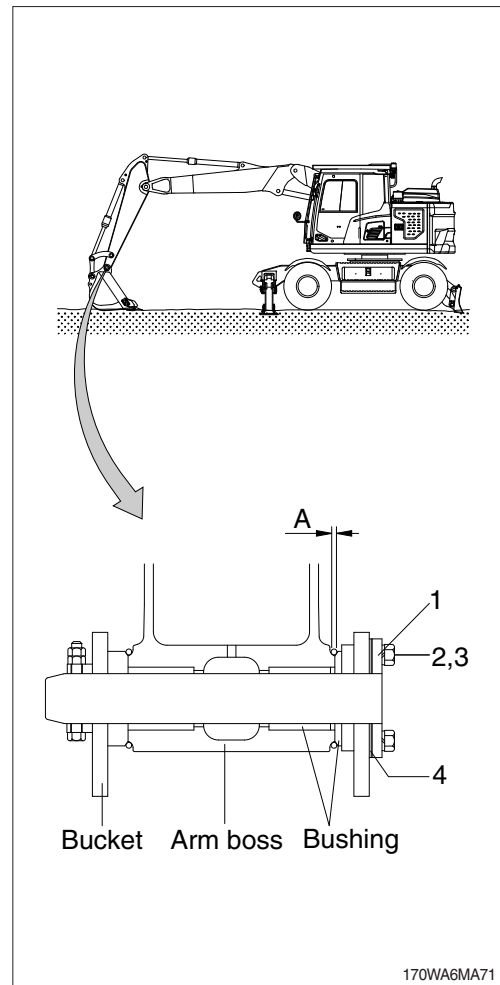
47) ADJUSTMENT OF BUCKET CLEARANCE

- (1) Lower the bucket on the ground as shown in the illustration.
- (2) Swing to the left and keep arm boss in contact with the left bucket ear.
- (3) Lock the safety knob to the LOCK position and stop the engine.
- (4) Measure the clearance (A) between bucket and arm boss. This is the total clearance.

(5) Adjusting

- ① Loosen bolt (2), and remove washer (3), plate (1) and shim (4).
- ② Remove the shim equivalent value with measuring value.
- ③ Assemble the parts in the reverse order of removal.
 - Tightening torque : $29.6 \pm 3.2 \text{ kgf} \cdot \text{m}$
($214.0 \pm 23.1 \text{ lbf} \cdot \text{ft}$)
 - Normal clearance : $0.5 \sim 1.0 \text{ mm}$
($0.02 \sim 0.04 \text{ in}$)

※ If the bucket is not adjusted correctly, noise and vibration will occur. This will also cause damage to O-ring and bushings prematurely.



48) LUBRICATE PIN AND BUSHING

(1) Lubricate to each pin of working device

Lubricate the grease to the grease nipple according to the lubricating interval.

No.	Description	Qty
1	Lubrication manifold at boom	6
2	Boom cylinder pin	2
3	Boom and arm connection pin	1
4	Arm cylinder pin (Rod side)	1
5	Bucket cylinder pin (Head, rod)	2
	Bucket link (Control rod)	3
	Arm and control link connection pin	1
	Arm and bucket connection pin	1
6	Boom rear bearing center	1
7	Dozer blade connection pin	12
8	Outrigger connection pin	8
9	Adjustment boom cylinder	2

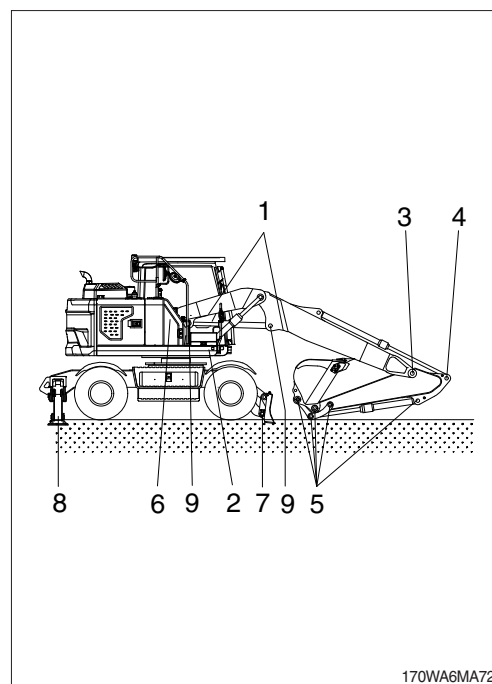
※ Shorten lubricating interval when working in water or dusty place.

(2) Dust seals are mounted on the rotating part of working device to extend the lubricating interval.

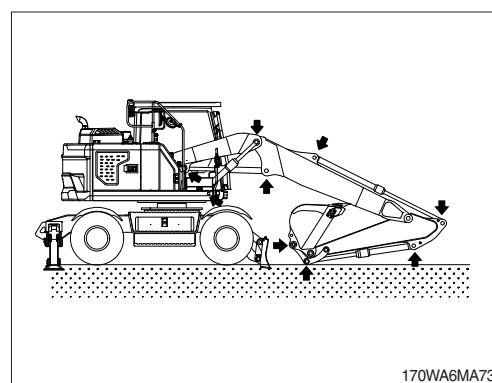
※ Mount the lip so it is facing outside when replace dust seal.

※ If it is assembled in wrong direction, it will cause fast wear of pin and bushing, and create noise and vibration during operation.

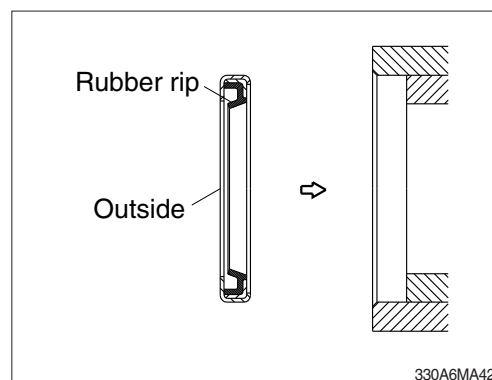
※ Install seal in the same manner as shown in the illustration. Use a plastic hammer to lightly and evenly tap the seal into place.



170WA6MA72



170WA6MA73

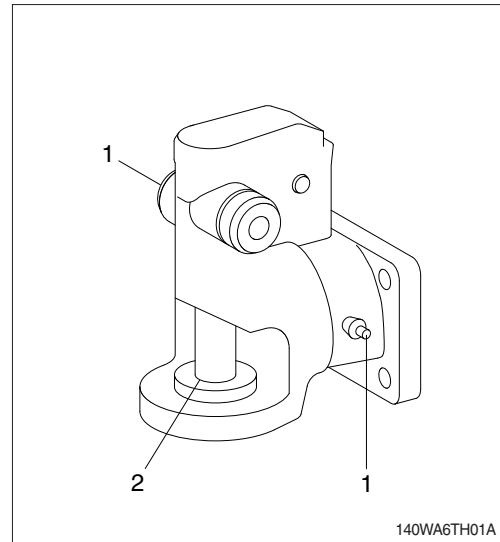


330A6MA42

49) TRAILER HITCH GREASING

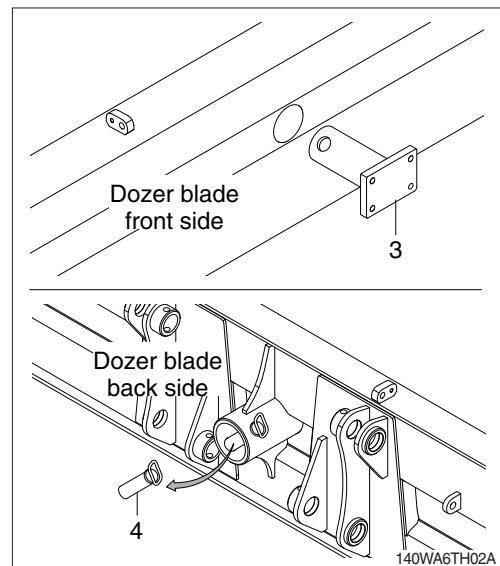
- ※ If a removable trailer towing hitch is installed on your machine as an option on the blade it must be greased regularly.
- ※ Lubricate as the manual of an installed hitch.

- (1) Grease the lubrication nipples (1) and the draw-bar eye seat (2) in regular intervals according to the condition of use and after each cleaning with pressurized air.



- (2) If the trailer hitch is mounted on the blade, grease the trailer hitch bracket (3) and the fixation pin (4) on the back of the blade.

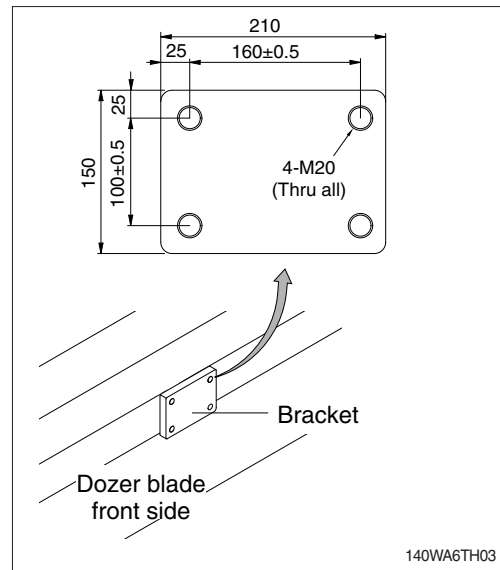
- ※ Lubricate every 100 hours.



- ※ When a towing hitch is installed, the regularly inspection for wear on the towing hitch must be performed by a service technician as the instruction of the towing hitch manufacturer.

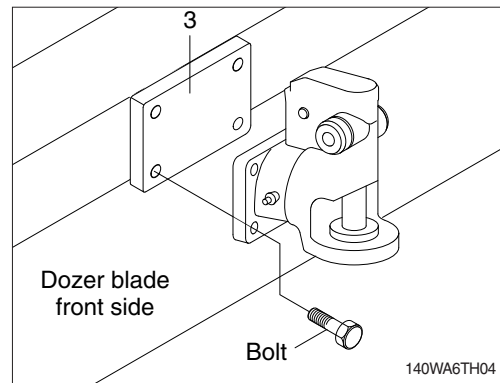
49-1) INSTALL AND REMOVAL OF THE TRAILER HITCH

(1) Mounting dimensions of the bracket.



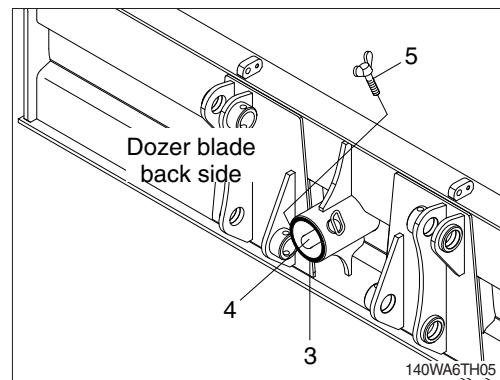
(2) Install

Fix the trailer hitch on the bracket (3) with bolts (M20, 4EA).



(3) Removal

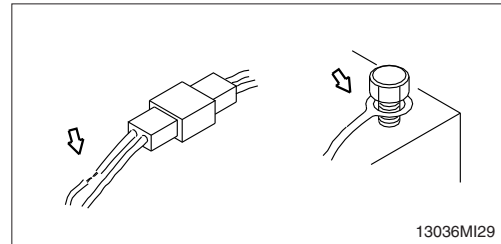
- Loosen the wing nut (5) and remove the fixation pin (4).
- Remove the trailer hitch bracket (3).



7. ELECTRICAL SYSTEM

1) WIRING, GAUGES

Check regularly and repair loose or malfunctioning gauges when found.



2) BATTERY

(1) Clean

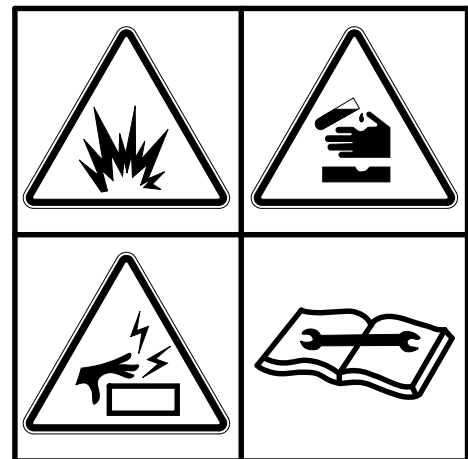
- ① Wash the terminal with hot water if it is contaminated, and apply grease to the terminals after washing.

⚠ Battery gas can explode. Keep sparks and flames away from batteries.

⚠ Always wear protective glasses when working with batteries.

⚠ Do not stain clothes or skin with electrolyte as it is acid.

Be careful not to get the electrolyte in eyes.
If eyes are affected, flush with clean water or eye solution and seek immediate medical attention.



(2) Recycle

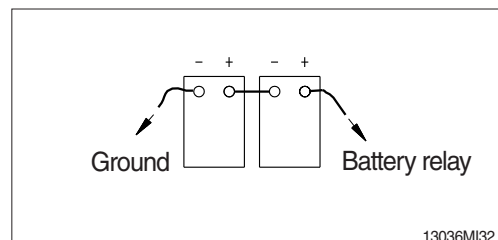
Never discard a battery.

Always return used batteries to one of the following locations.

- A battery supplier
- An authorized battery collection facility
- Recycling facility

(3) Method of removing the battery cable

Remove the cable from the ground connection first (⊖ terminal side) and reconnect it last when reassembling.



3) STARTING THE ENGINE WITH A BOOSTER CABLE

Follow these procedures when starting.

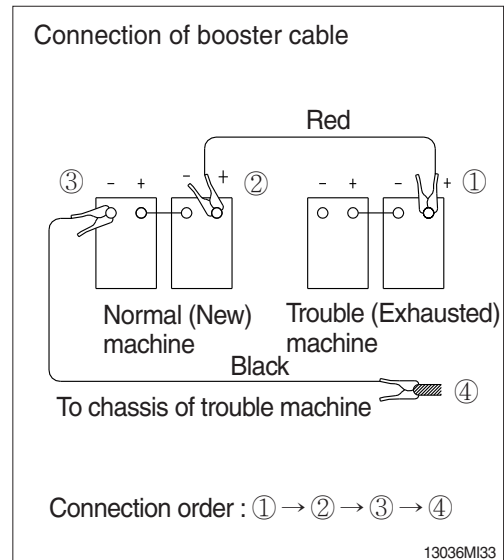
(1) Connection of booster cable

※ **Use the same capacity of battery for starting.**

- ① Make sure that the starting switches of the normal machine and trouble machine are both in the OFF position.
- ② Connect the red terminal of booster cable to the battery (+) terminal between exhausted and new battery.
- ③ Connect the black terminal of the booster cable between new battery (-) terminal and chassis of trouble machine.

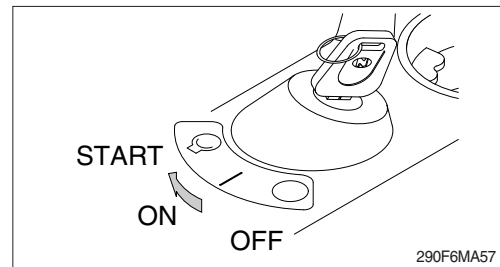
※ **Make and maintain a firm connection.**

※ **Sparks will occur slightly when making the final connection.**



(2) Starting the engine

- ① Start the engine of the normal machine and keep it running at high idle.
- ② Start engine of the troubled machine with starting switch.
- ③ If you can not start it with the first attempt, try again after 2 minutes.



(3) Taking off the booster cable

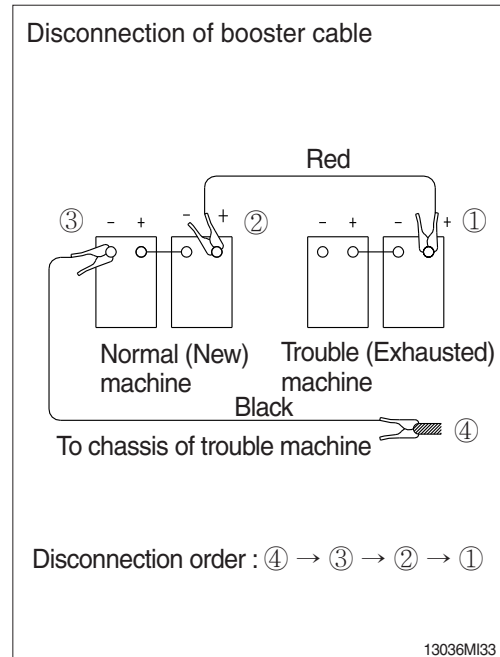
- ① Take off the booster cable (black).
- ② Take off the booster cable (red) connected to the (+) terminal.
- ③ Run engine at high idle until charging of the exhausted battery is complete.

▲ **Explosive gas is generated while using the battery or charging it. Keep any flames away and be careful not to cause a spark.**

※ **Charge the battery in a well ventilated area.**

※ **Place the machine on the earth or concrete. Avoid charging the machine on any steel or steel plates.**

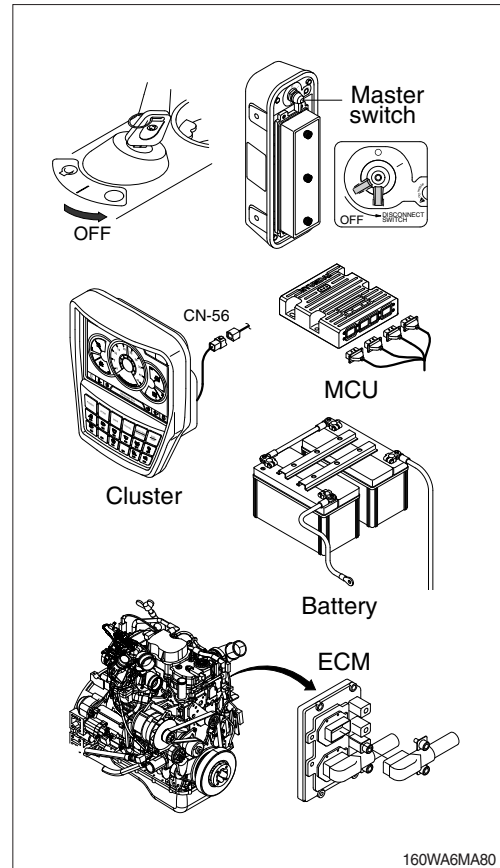
※ **Do not connect (+) terminal and (-) terminal when connecting booster cable because it will be shorted.**



4) WELDING REPAIR

Before welding, follow the below procedure.

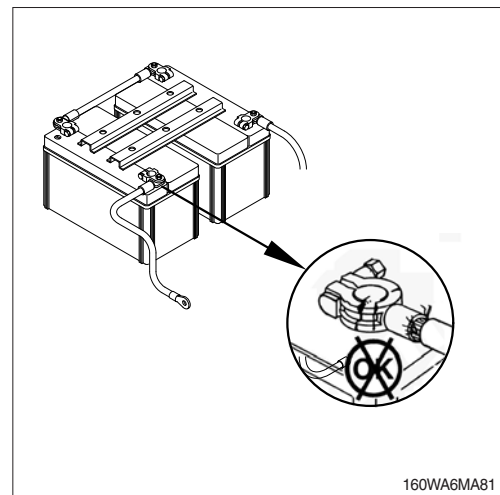
- (1) Shut off the engine and remove the key.
 - (2) Disconnect ground cable from battery by master switch.
 - (3) Before carrying out any electric welding on the machine, the battery cables should be disconnected and the connectors pulled out of the electronic control units (MCU, ECM, cluster etc).
 - (4) Connect the earth (ground) lead of the welding equipment as close to the welding point as possible.
- ※ **Remove all paint to ensure a solid ground is achieved.**
 - ※ **Do not weld or use cutting torch on pipes or tubes that contain flammable fluids. Clean them thoroughly with nonflammable solvent before welding or cutting on them.**
 - ▲ **Do not attempt to weld before carrying out the above.**
If not, it will cause serious damage to electric system.



5) BATTERY CABLE AND CONNECTIONS

▲ **Batteries can emit explosive gases. To reduce the possibility of personal injury, always ventilate the compartment before servicing the batteries.**

- (1) Remove and inspect the battery cables and connections for cracks or corrosion.
- (2) Replace broken terminals, connectors, or cables.
- (3) If the connections are corroded, use a battery brush or wire brush to clean the connections.
- (4) Make sure all debris are removed from the connecting surfaces.
- (5) Install the cables and tighten the battery connections.
- (6) Coat the terminals with grease to prevent corrosion.

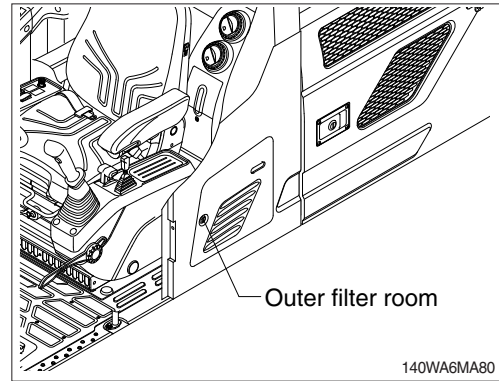


8. AIR CONDITIONER AND HEATER

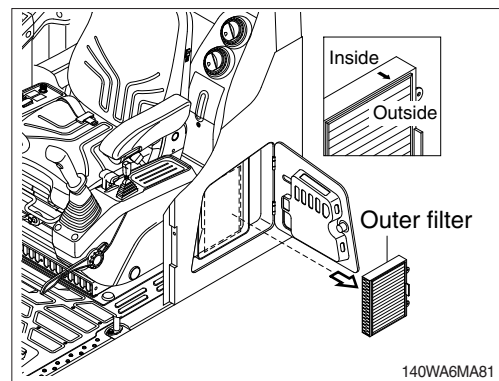
1) CLEANING AND REPLACEMENT OF OUTER FILTER

※ **Always stop the engine before servicing.**

- (1) Open the outer filter room.



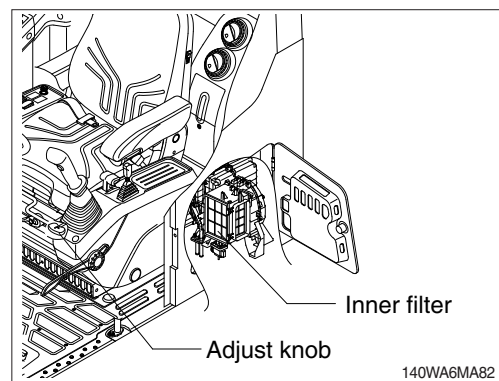
- (2) Remove the outer filter.
- ※ **When installing a filter, be careful not to install the filter in the wrong direction**
- (3) If the filter is damaged or badly contaminated, use a new filter.



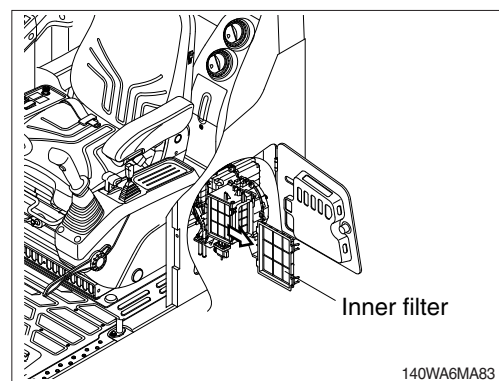
2) CLEANING AND REPLACEMENT OF INNER FILTER

※ **Always stop the engine before servicing.**

- (1) Move seat and console box forward by using the adjust knob.



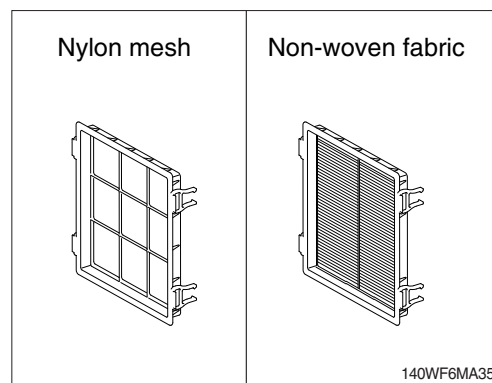
- (2) Remove the inner filter.



(3) Check the inner filter type.

(4) Non-woven fabric type

- If the filter is damaged or badly contaminated, use a new filter.



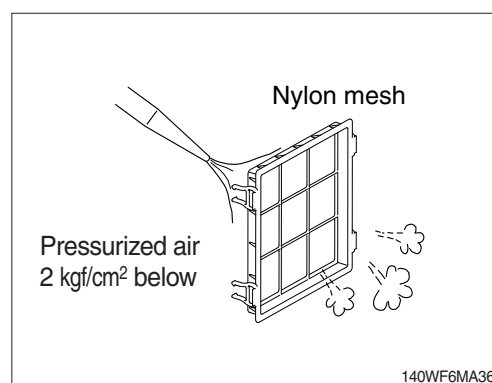
(5) Nylon mesh type

- Clean the inner filter using a pressurized air (below 2 kgf/cm², 28 psi) or washing with water.

△ **When using pressurized air, be sure to wear safety glasses.**

※ **Dry off after washing with water.**

(6) Inspect the filter after cleaning. If it is damaged or badly contaminated, use a new filter.



3) PRECAUTIONS FOR USING AIR CONDITIONER

- (1) When using the air conditioner for a long time, open the window once every one hour or ventilate by using the fresh air function.
- (2) Be careful not to overcool the cab.
- (3) The cab is properly cooled if the operator feels cool when entering from outside (about 5°C lower than the outside temperature).
- (4) When cooling, change air occasionally.

4) CHECK DURING SEASON

Ask the service center for replenishment of refrigerant or other maintenance service so that the cooling performance does not wear prematurely.

5) CHECK DURING OFF-SEASON

Operate the air conditioner 2 or 3 times a month (each time for a few minutes) to avoid loss of oil film in the compressor.

6) REFRIGERANT

(1) Equipment contains fluorinated greenhouse gas.

Model	Type	Quantity	GWP : 1430
HW170A CR	HFC-134a	0.75 kg (1.65 lb)	CO ₂ eq. : 1.0725 t

※ GWP

Global warming potential (GWP) is a measure of how much heat a gas traps in the atmosphere relative to that of carbon dioxide (CO₂). GWP is calculated in terms of the 100-year warming potential of 1 kg of a greenhouse gas relative to 1 kg of CO₂.

(2) Environmental precautions

The air conditioning system of the machine is filled with HFC-134a refrigerant at the factory.

HFC-134a refrigerant is a fluorinated greenhouse gas and contributes to global warming.

Do not release refrigerant into the environment.

(3) Safety precautions

Work on the air conditioning system must only be performed by a qualified service technician.

Do not attempt to perform work on the air conditioning system.

Wear safety goggles, chemical resistant gloves and appropriate personal protective equipment to protect bare skin when there is a risk of contact with refrigerant.

(4) Action in case of exposure

① Eye contact / Limited skin contact

Rinse with warm water and apply a light bandage. Seek medical attention immediately.

② Extensive skin contact

Rinse with warm water and carefully heat the area with warm water or warm clothing.

Seek medical attention immediately.

③ Inhalation

Leave the area and find fresh air. Seek medical attention immediately.